



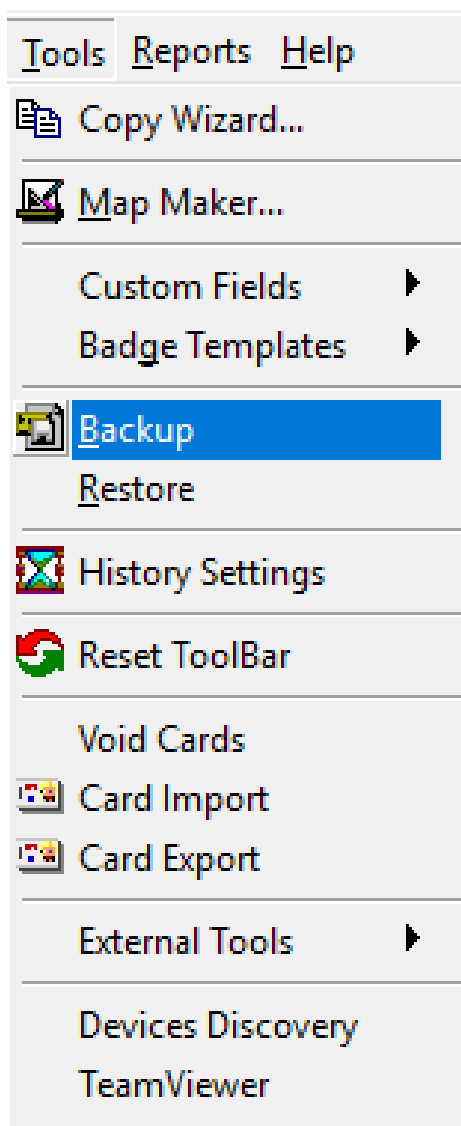
Technical Guide

Database transfer from SQL Server 2000/2003 to 2005/2008

Note: If you are running a database on SQL Server 2000, it is important that you transfer the database to 2005 or 2008 and not straight to later versions.

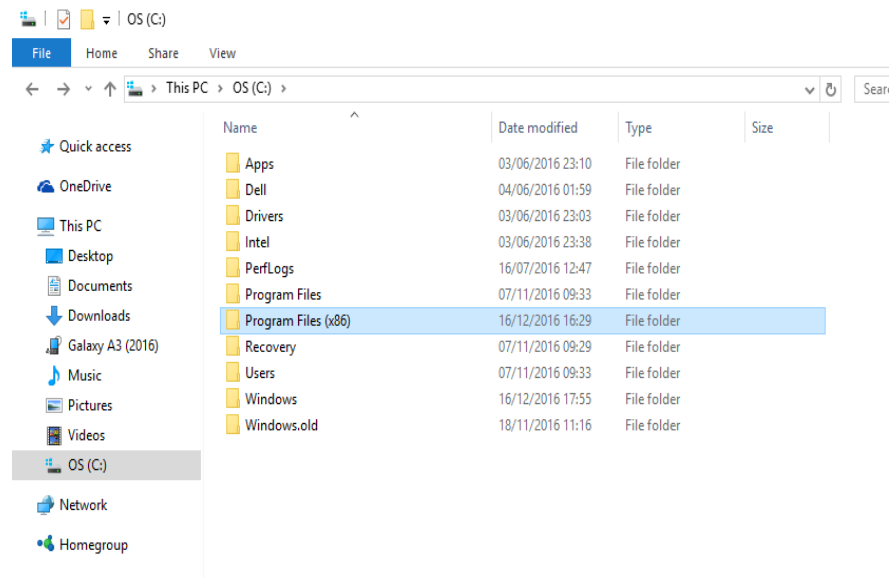
On your SQL Server 2000 PC, Select **Tools** at the top of the software and click **Backup**.

Axiom for IFSEC Show

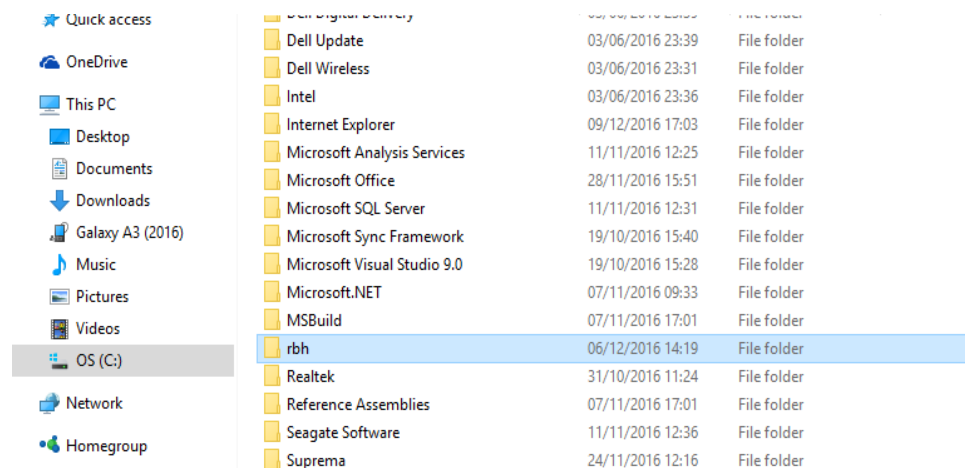


Note: You will need to run a backup the above steps on the SQL Server 2005/2008, before restoring the SQL Server 2000/2003 backup.

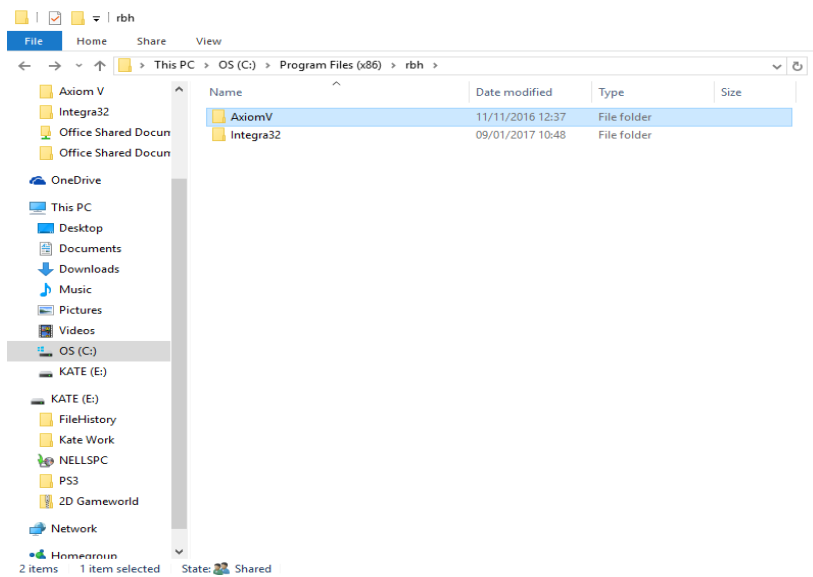
To transfer the SQL Server 2000 backup, go to the C-drive and select **Program Files (x86)**.



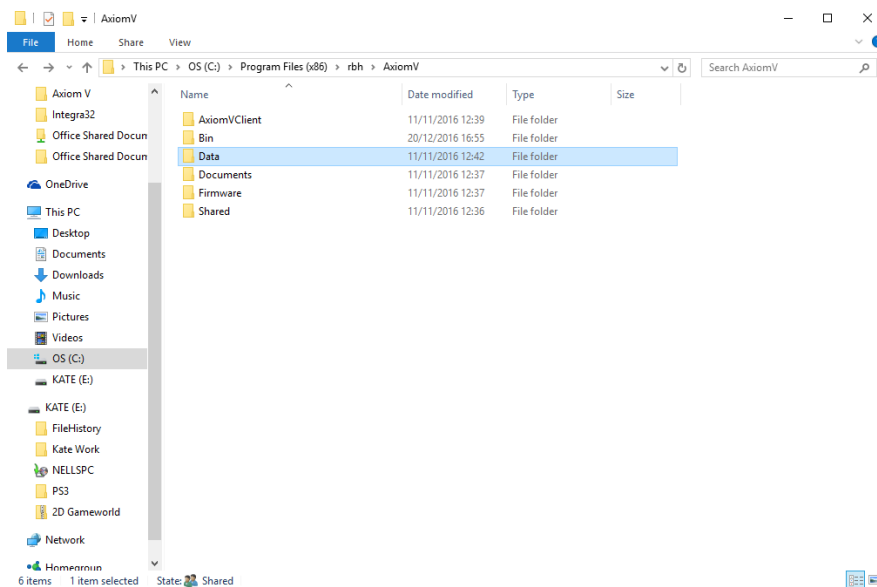
Scroll down and double click the **rbh** folder.



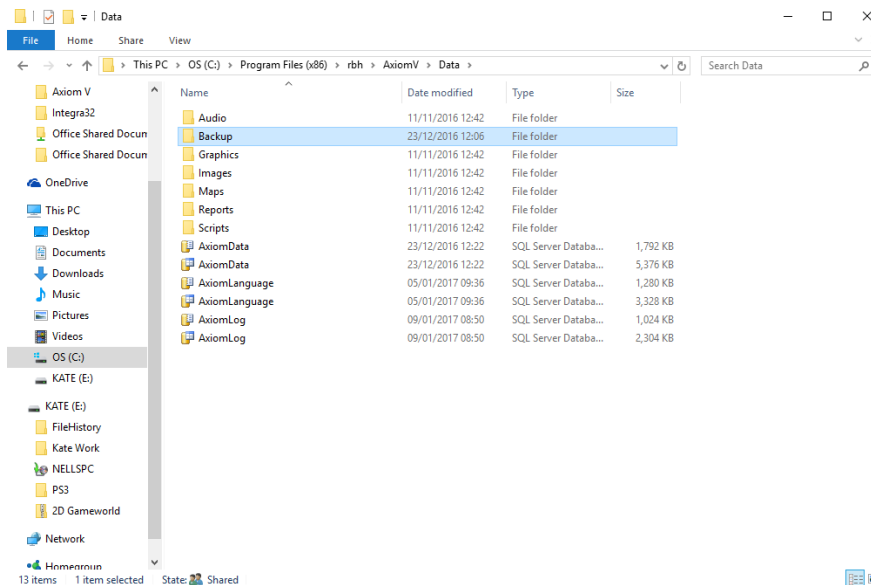
Double click the **Axiom V** folder.



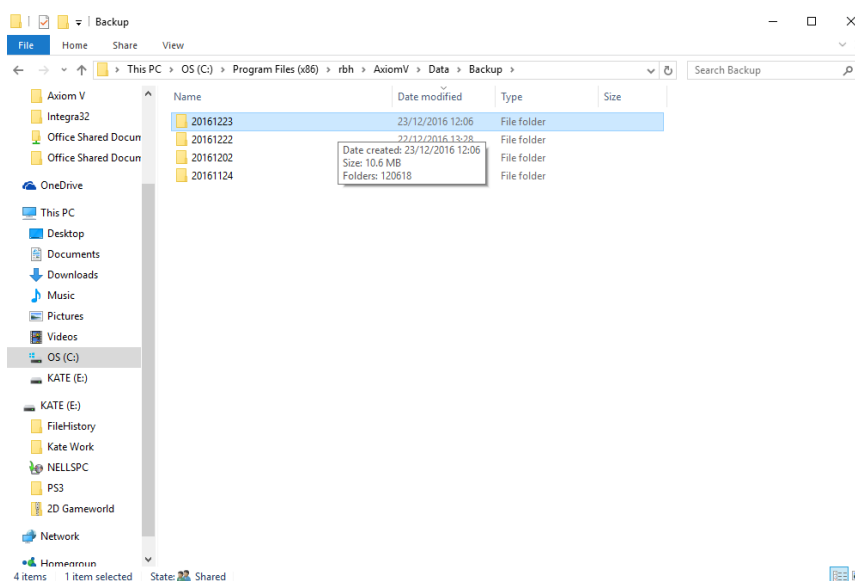
Next, double click the **Data** folder.



The database will be located in the backup folder. The database from the SQL Server 2000/2003 will need to be copied over into the default folder to overwrite the default.

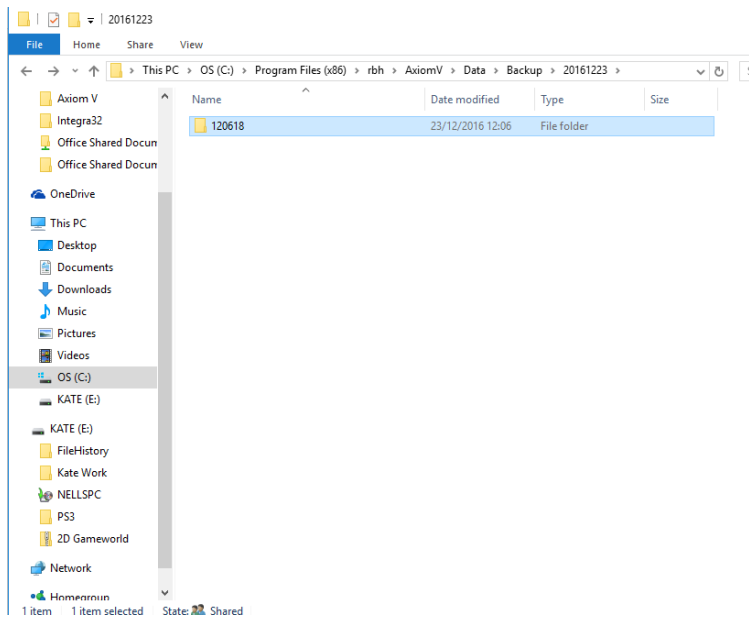


The correct database will have the latest timestamp (20161223). Double click this folder.

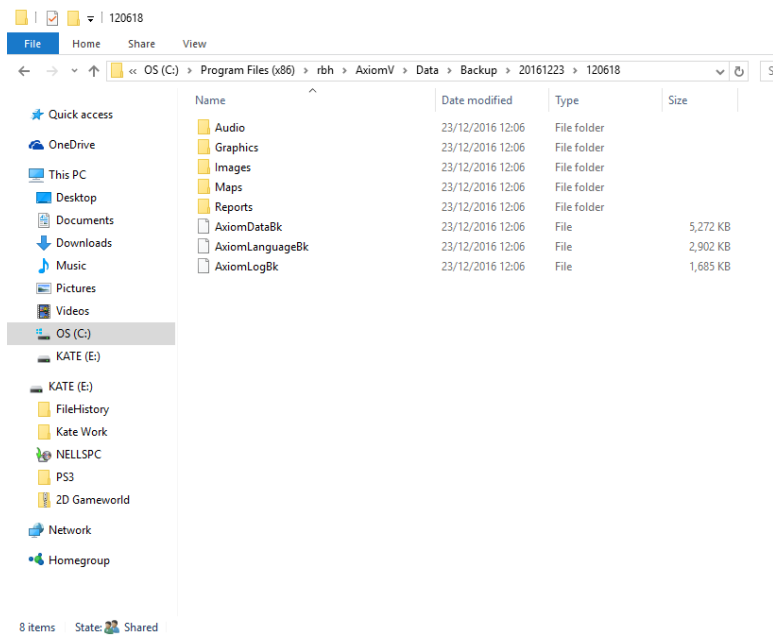


A window will appear asking you to replace the default database with the new one. Click **Replace the file in the destination** to complete the process. When restoring the database in the Axiom V software, the new backup will appear.

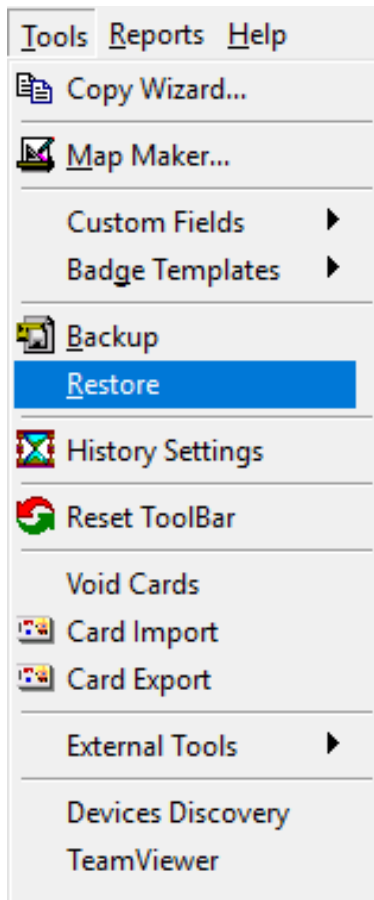
Double click this folder.



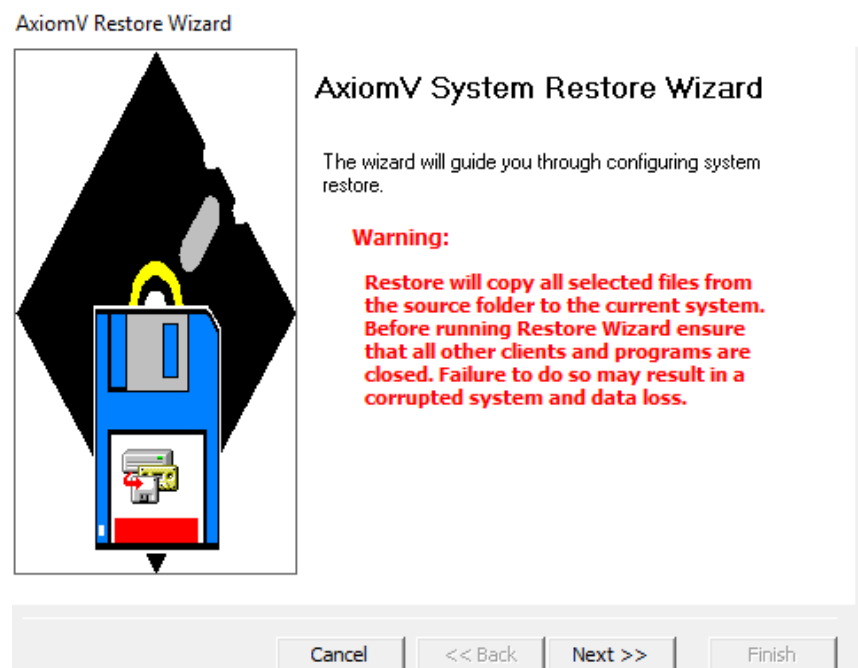
The original database will need to be transferred over to overwrite the default.



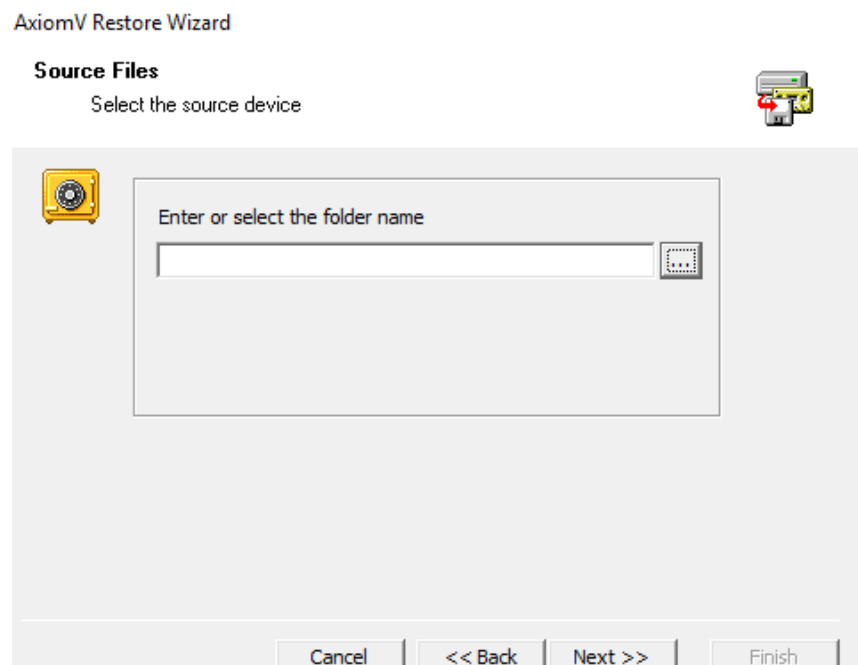
To restore the SQL Server 2000 backup on the PC that's running the SQL Server 2005/2008, go to **Tools** and select **Restore**.



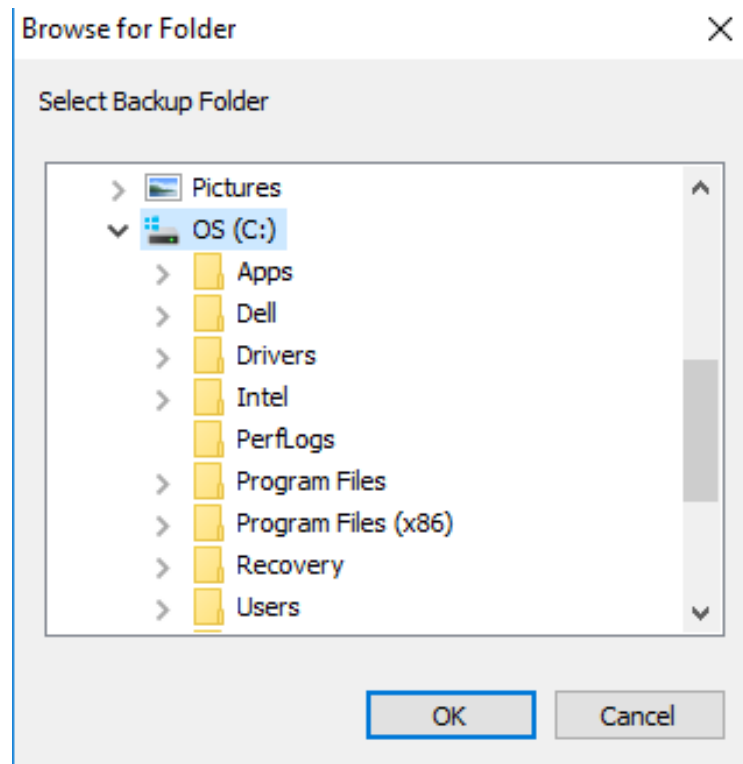
A **Restore Wizard** will appear. (make sure you have read the warning message before restoring). Click **Next** when finished.



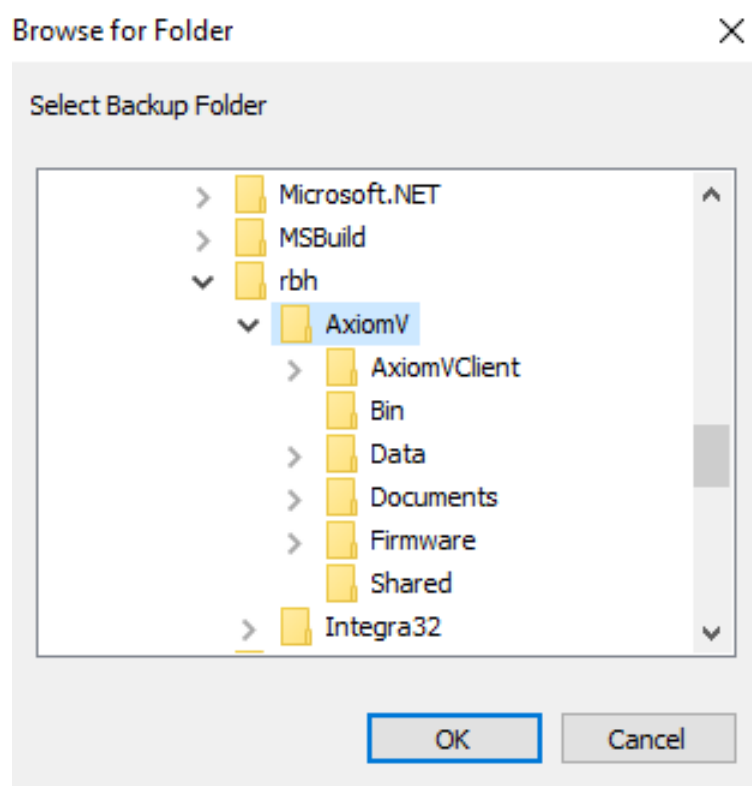
Next, select the **folder name** of where the database is located.



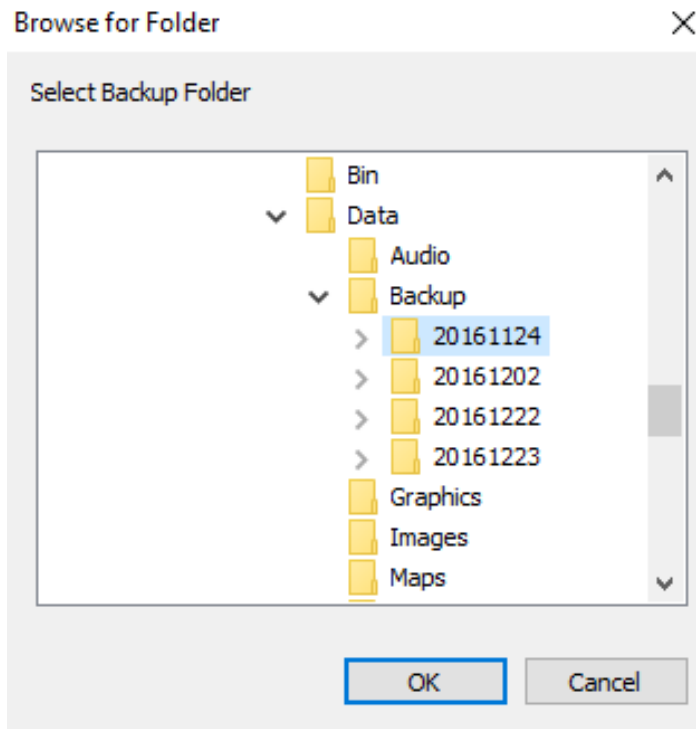
Select the C-drive and click on **Program Files (86)**.



Select the **rbh** folder, then click on **Axiom V**.



Select the **Data** folder, then **Backup**, and you will see one or more databases in the folder. You will know which database to select as there will be a date stamp (**20161124**). This folder is the latest database shown below. Click **OK** when finished.

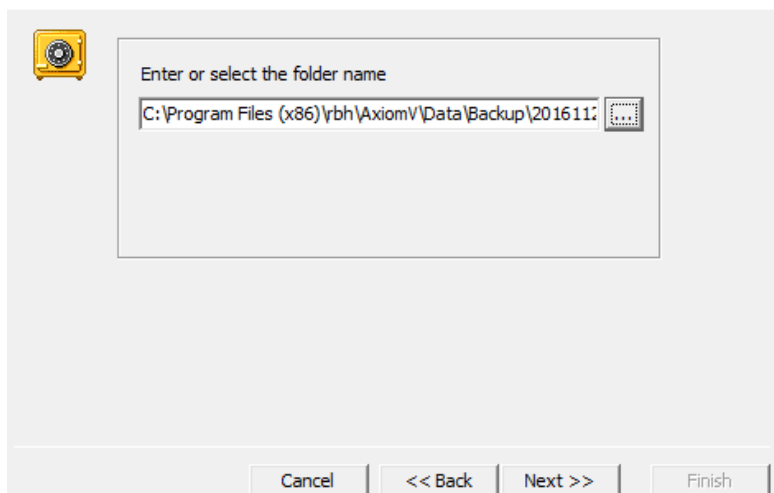


You will now see the file location in the box. Click **Next** once finished.

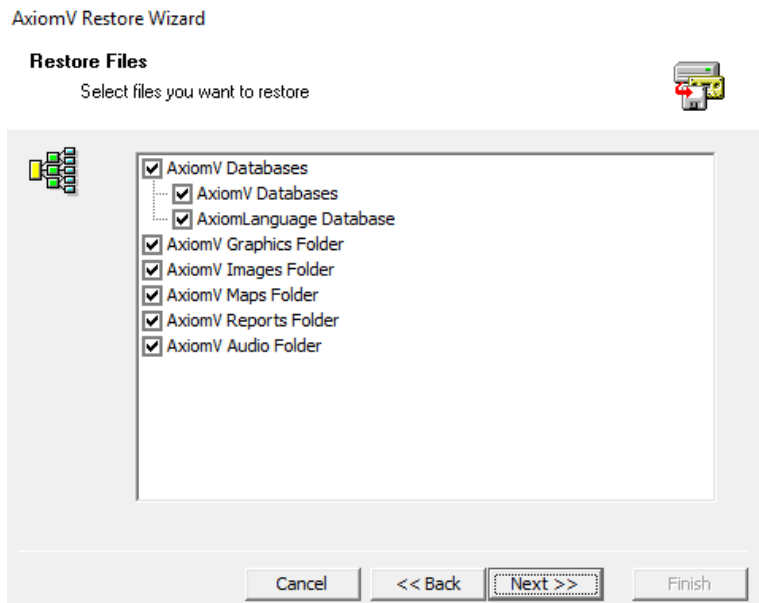
AxiomV Restore Wizard

Source Files

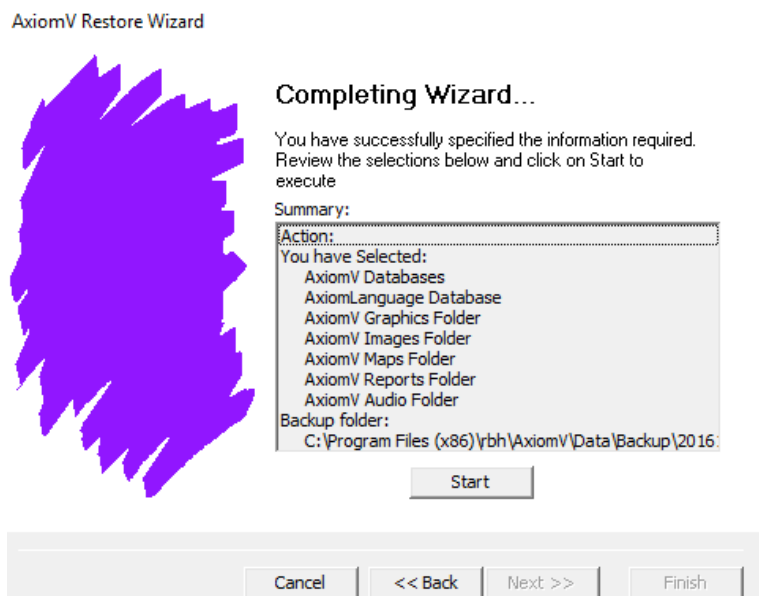
Select the source device



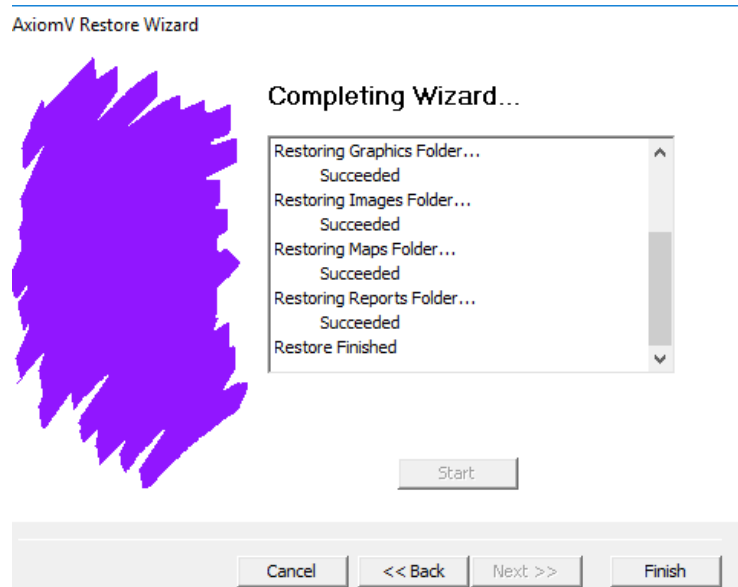
Select all files in the database to begin the restore. Once selected, click **Next** to start the restore.



Click **Start** to begin restoring.



When completed, it will show **Restore Finished**.



Note: If you are running a database on SQL Server 2005/2008 and want to transfer it to SQL Server 2012, follow the above steps.