

AxiomV™ Web Client

INSTALLATION MANUAL



RBH

ACCESS
TECHNOLOGIES
INC.

Table of Contents

AxiomV™ Web Client.....	1
Pre-requisites and considerations.....	3
Supported Operating Systems	3
Enable IIS.....	4
Windows 7	4
Windows 8/Windows 8.1:.....	6
Windows 2008 Server/ Windows Server 2008 R2	9
Before You Begin	9
Windows Server 2012	16
Before You Begin	16
Install AxiomV™ Web Client (AWC) Application.....	27
Configure IIS for SSL operation	36
Customization	48
Test AWC.....	52

AxiomV™ Web Client is a web application developed on Visual Studio 2012 that will run on Microsoft IIS web server built in to Windows OS, and on SQL Server Database (installed by AxiomV™ Security systems' setup).

Pre-requisites and considerations

Supported Operating Systems

Windows 7 Professional or Ultimate¹ (IIS 7.5)

Windows 8 and 8.1

Windows 2008 server (IIS 7)

Windows Server 2012

- You must have *Administrator* privileges to install this feature.
- AxiomV™ must be installed and registered with an appropriate license file to enable web functionality, prior to AxiomV™ Web Client (AWC) setup.
- The *Internet Information Services* (IIS) has to be installed prior to AxiomV™ Web Client (AWC) installation. If .NET framework 4.5 is currently not installed, it will be installed automatically by AWC setup.
- If Crystal Reports Basic V13.0 redistributable component is not currently installed, it will be installed automatically by AWC setup.

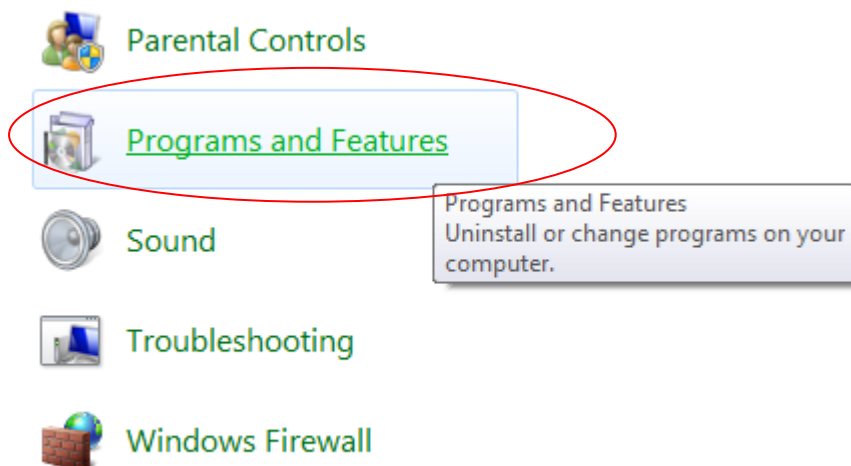


The necessary .NET and Crystal Reports V 13.0 for VS.Net 2012 (no licence required) files are included in the package for manual installation as well.

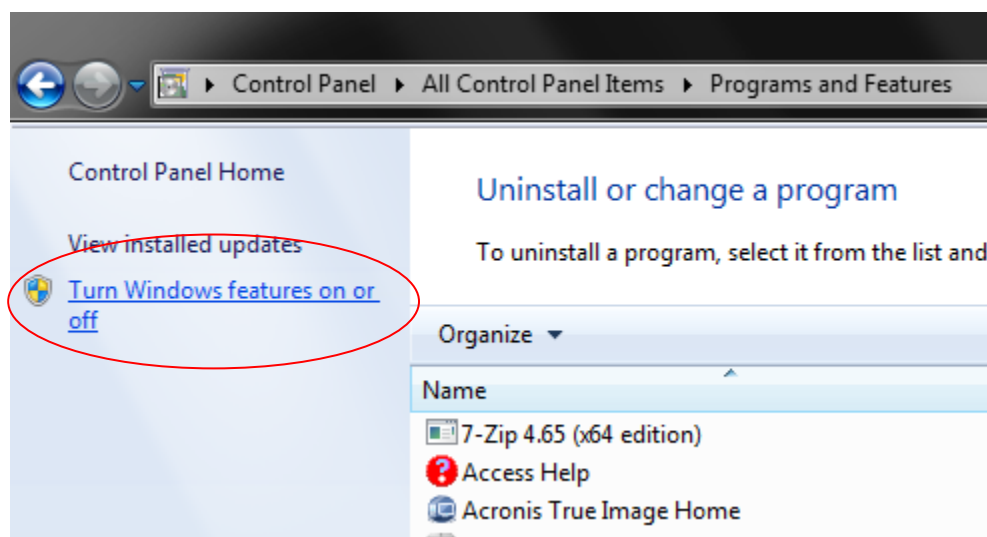
Enable IIS

Windows 7

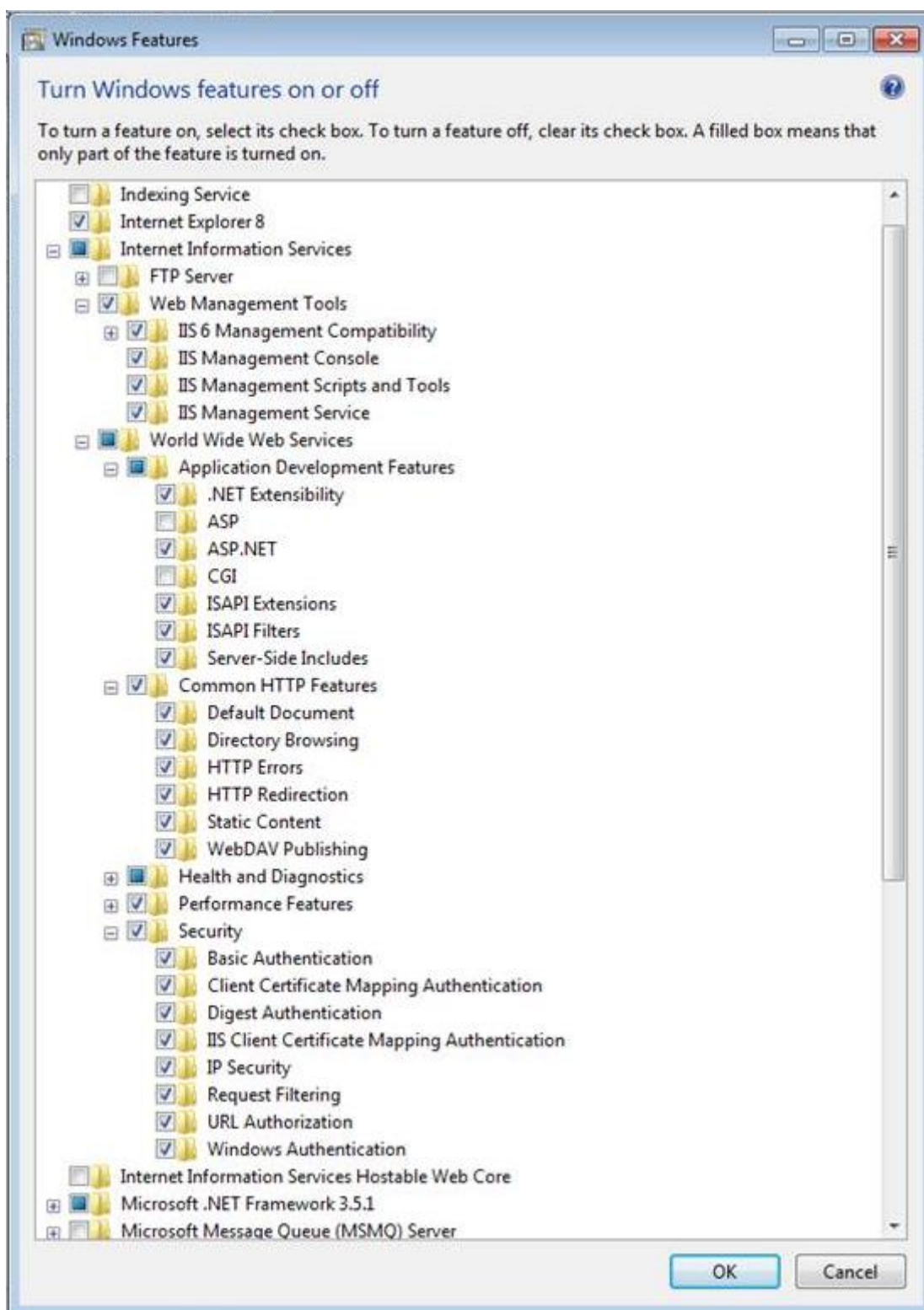
Go to *Control Panel* and Launch *Programs and Features*.



Select '*Turn Windows features on or off*'.



Then select all of the features except: ASP and CGI.

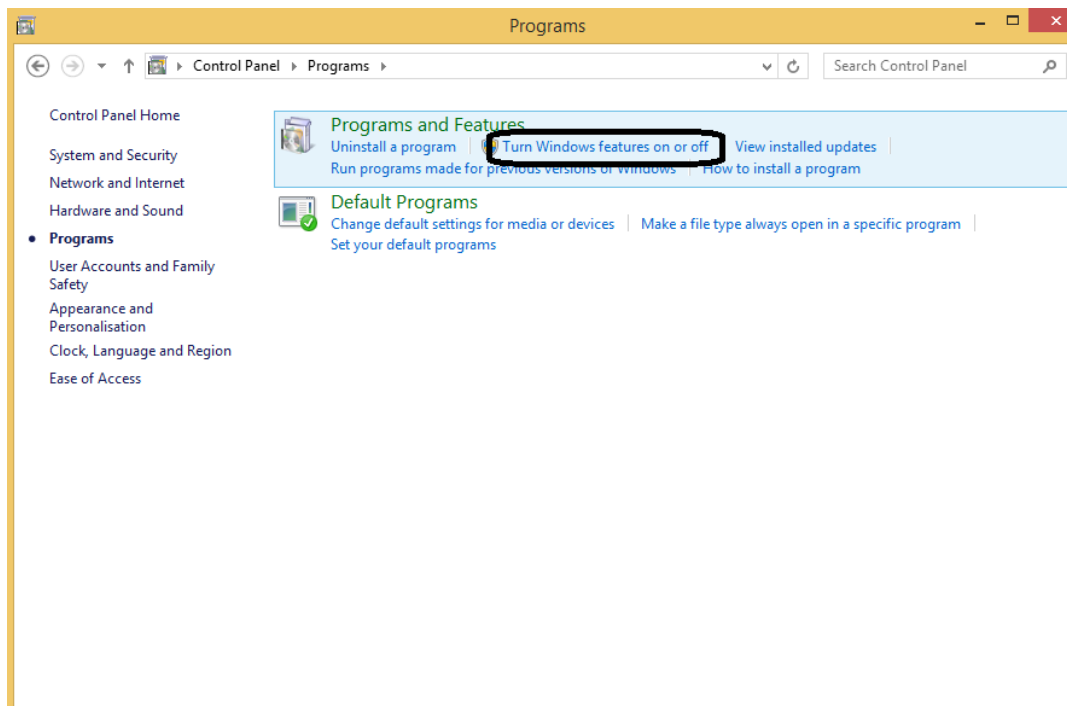
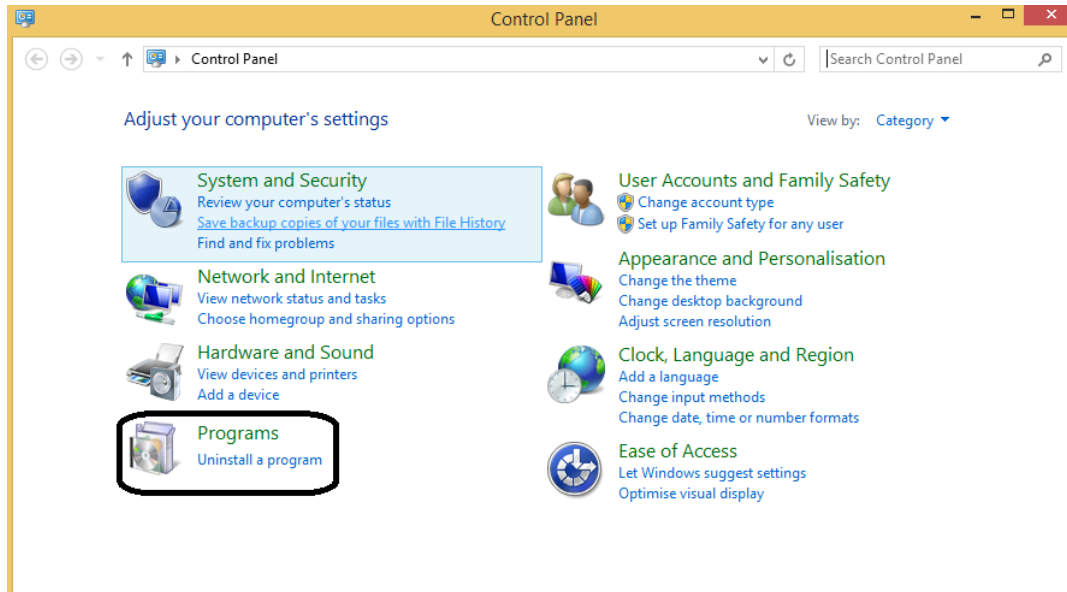


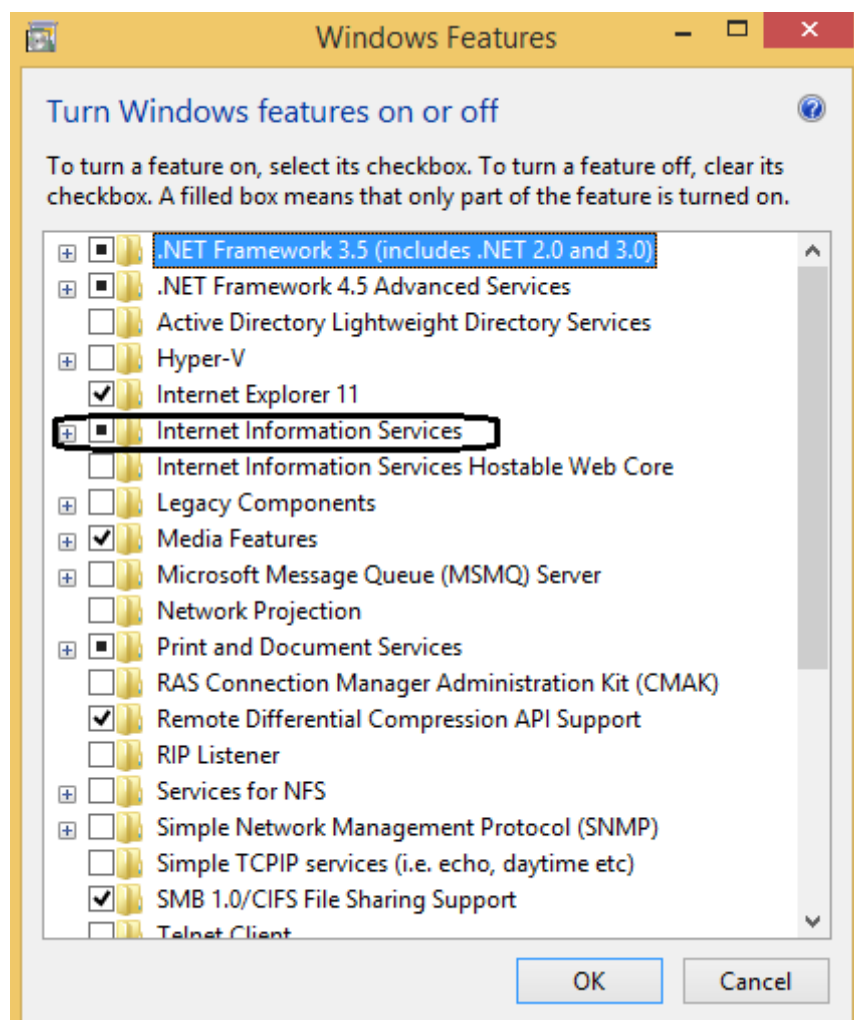
Windows 8/Windows 8.1:

On Windows 8/Windows 8.1, the IIS installation is the same as on Windows 7.

Go to *Control Panel*, *Programs* and select *Turn Windows features on or off*.

Then make your selections under *Internet Information Services*.





Turn Windows features on or off

To turn a feature on, select its checkbox. To turn a feature off, clear its checkbox. A filled box means that only part of the feature is turned on.

- ☒ Internet Explorer 11
- ☒ Internet Information Services
 - ☐ FTP Server
 - ☒ Web Management Tools
 - ☒ IIS 6 Management Compatibility
 - ☒ IIS Management Console
 - ☒ IIS Management Scripts and Tools
 - ☒ IIS Management Service
 - ☒ World Wide Web Services
 - ☒ Application Development Features
 - ☐ .NET Extensibility 3.5
 - ☒ .NET Extensibility 4.5
 - ☐ Application Initialization
 - ☐ ASP
 - ☐ ASP.NET 3.5
 - ☒ ASP.NET 4.5
 - ☐ CGI
 - ☒ ISAPI Extensions
 - ☒ ISAPI Filters
 - ☒ Server-Side Includes
 - ☐ WebSocket Protocol
 - ☒ Common HTTP Features
 - ☐ Health and Diagnostics
 - ☒ Performance Features
 - ☒ Security
 - ☒ Basic Authentication
 - ☐ Centralized SSL Certificate Support
 - ☒ Client Certificate Mapping Authentication
 - ☒ Digest Authentication
 - ☒ IIS Client Certificate Mapping Authentication
 - ☒ IP Security
 - ☒ Request Filtering
 - ☒ URL Authorization
 - ☒ Windows Authentication

Click 'OK' and close all.

Windows 2008 Server/ Windows Server 2008 R2

Before You Begin

Ensure that you have administrative user rights on the computer on which you plan to install IIS.



Note that by default, you do not have administrative user rights if you are logged on as a user other than the built-in administrator, even if you were added to the local Administrators group on the computer (this is a new security feature in Windows Server 2008 called *Local User Administrator*).

Log on either to the built-in administrator account, or explicitly invoke applications as the built-in administrator by using the 'run as' command-line tool.



You can run 'run as' /user: administrator cmd.exe so that every application you run from that command line will be elevated, eliminating the need to use the 'run as' syntax from that command line.

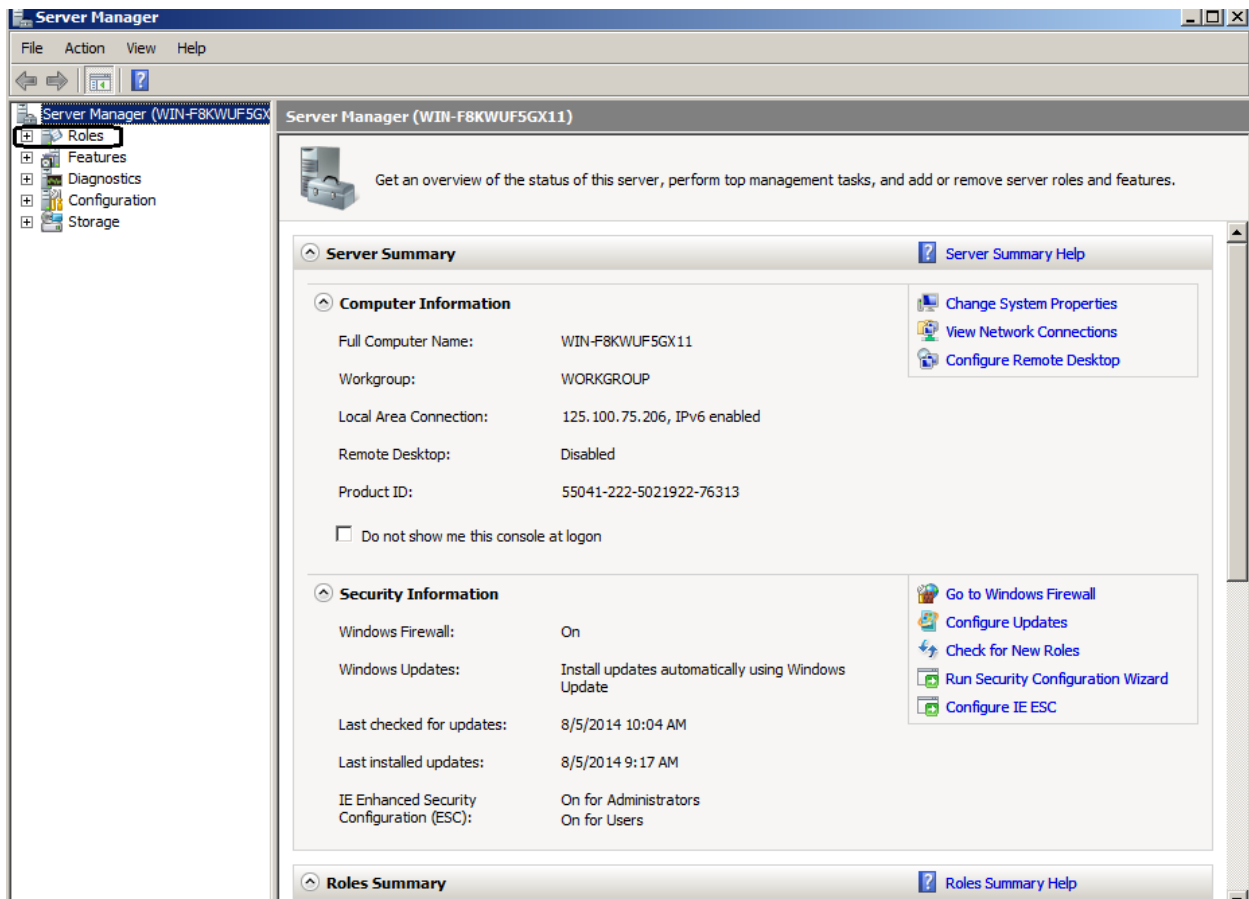
If you are logged on to an account other than the built-in local administrator account, you may see the following security alert dialog box.



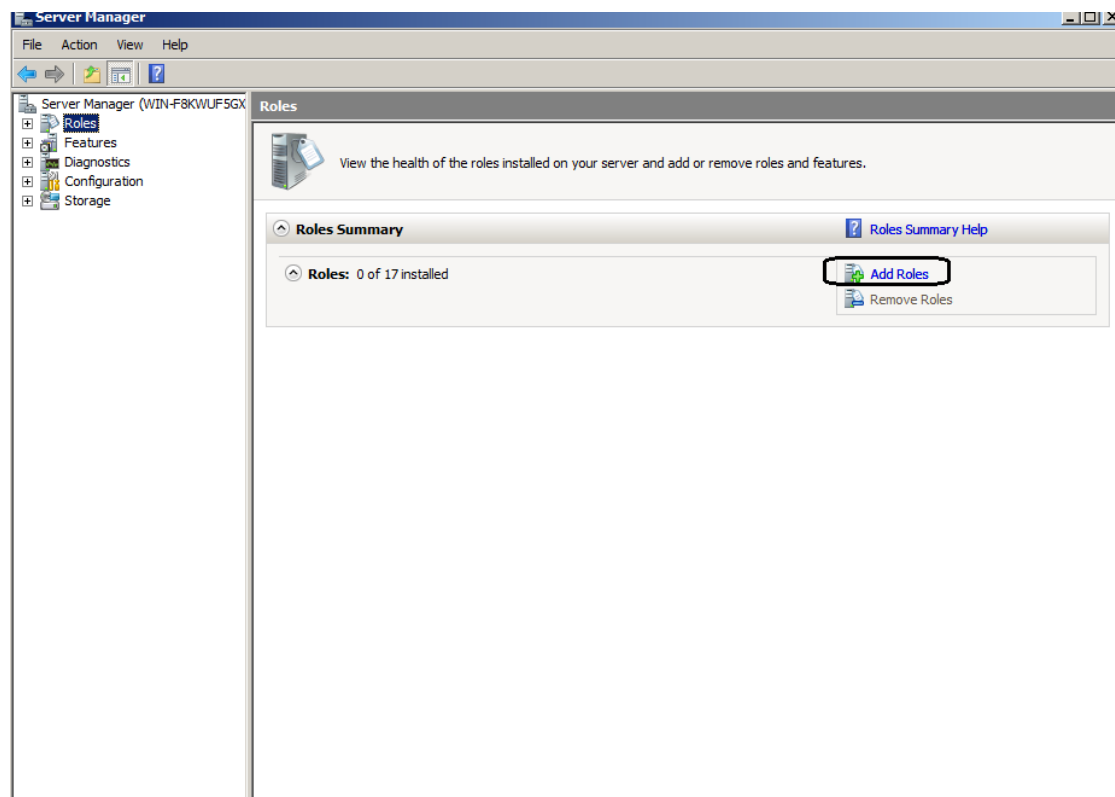
IIS is one of the Windows Server's server roles. IIS 7 can be installed through the graphical user interface (GUI) by using the new *Server Manager* interface after the Windows Server operating system is installed.

Server Manager provides a single dashboard to install or uninstall server roles and features. *Server Manager* also gives an overview of all currently installed roles and features. When IIS 7 is chosen from the *Server Manager*, the basic components and services needed for IIS are automatically selected.

Click Start -> All Programs -> Administrative Tools -> Server Manager



In the *Server Manager* window, scroll down to *Roles Summary*, and then click *Add Roles*.



The *Add Roles Wizard* will start with a *Before You Begin* page. The wizard asks for verification of the following:

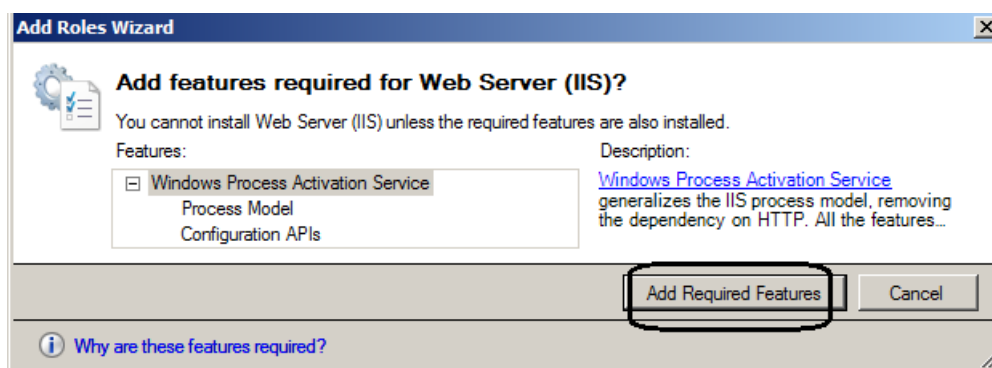
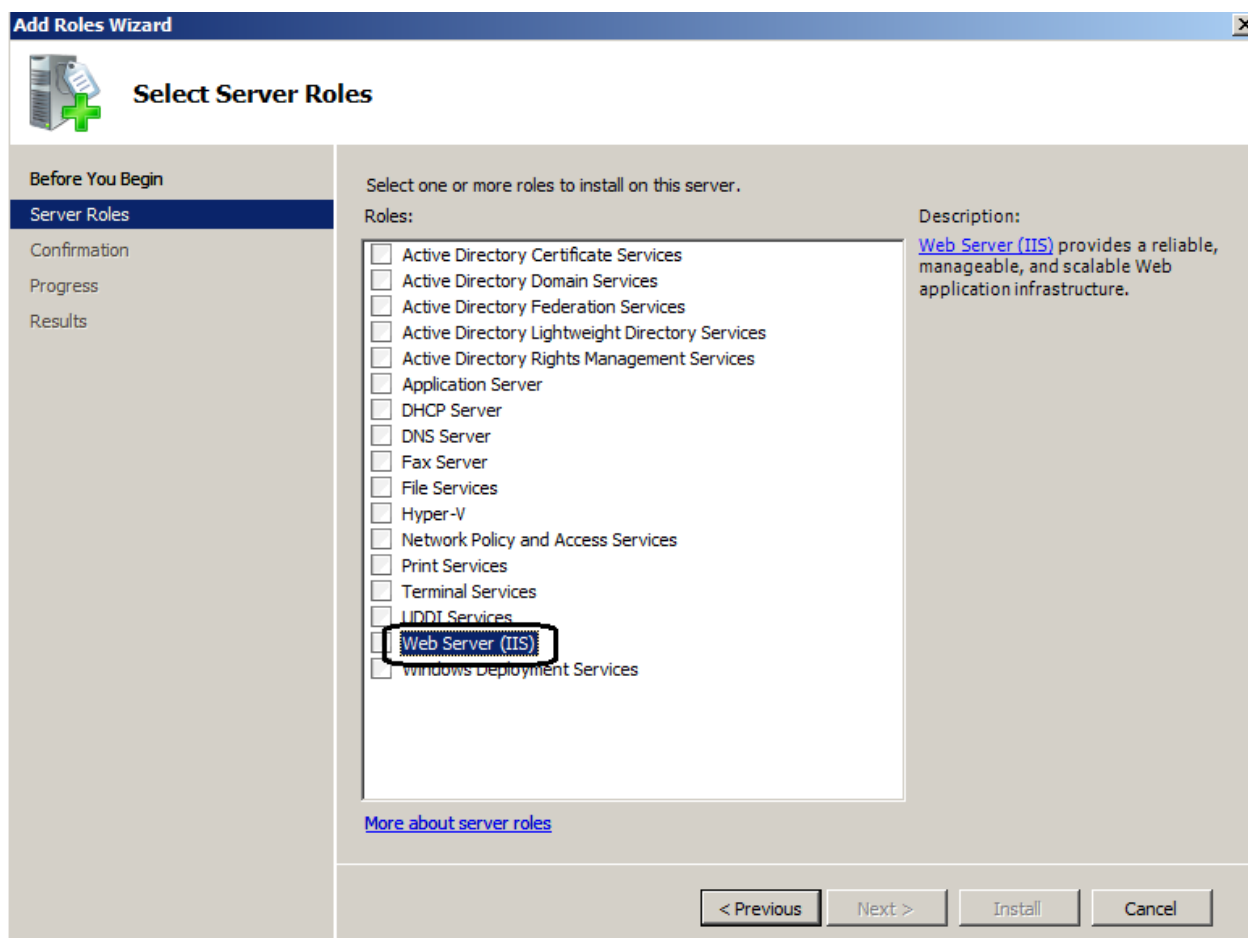
- The administrator account has a strong password.
- The network settings, such as IP addresses, are configured.
- The latest security updates from Windows Update are installed.

Select *Web Server (IIS)* on the *Select Server Roles* page.

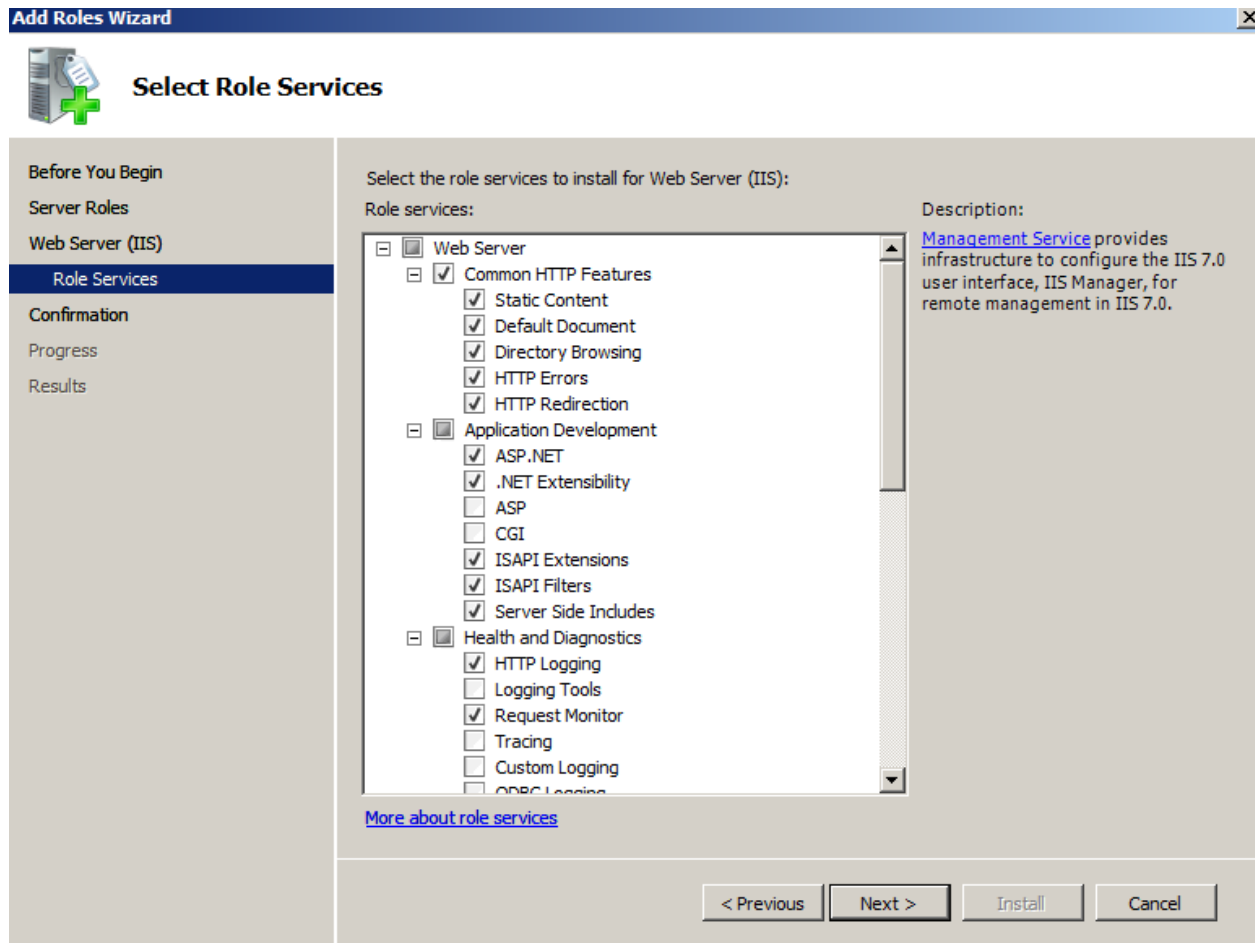
An introductory page will open with links for further information.



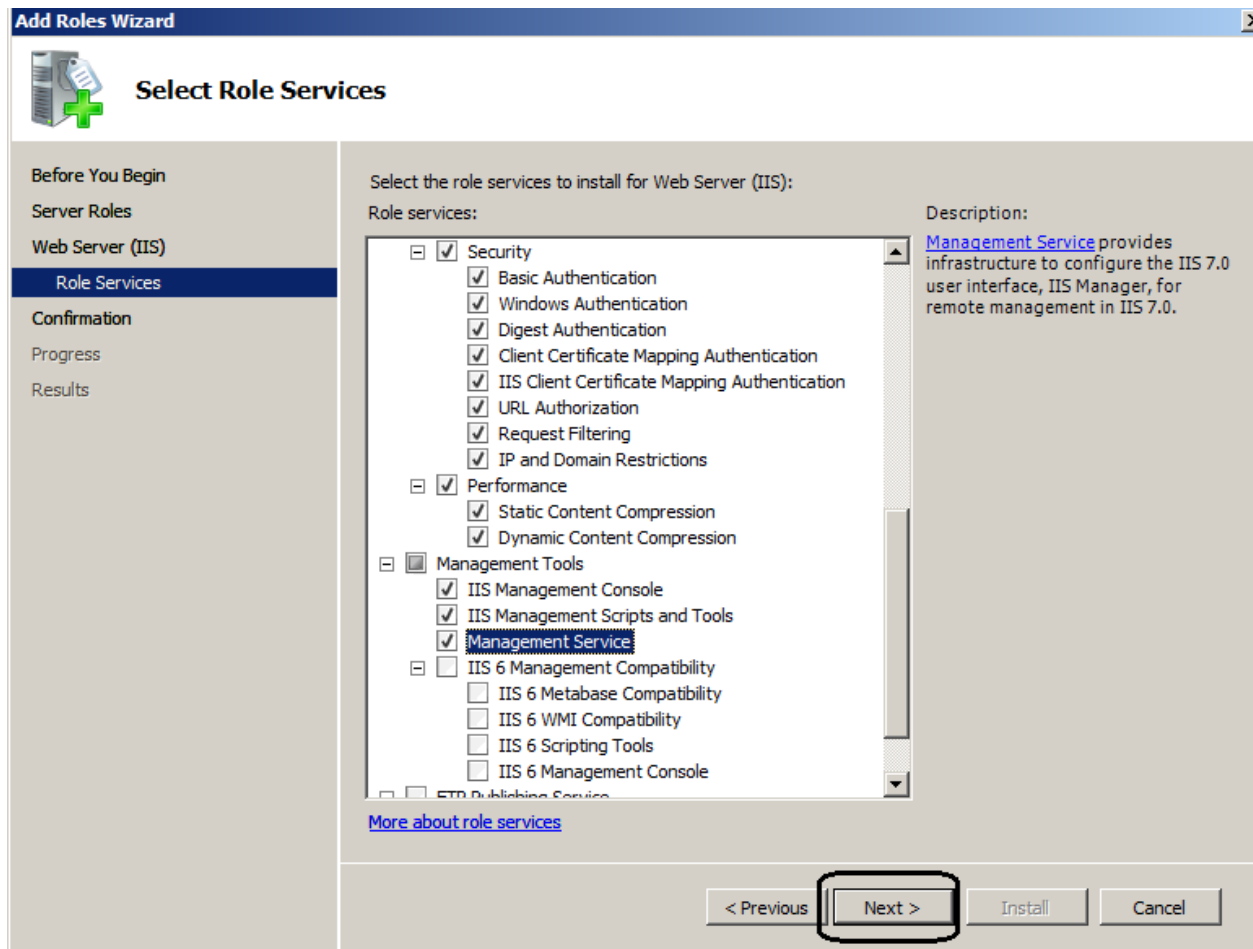
When you use the Add Roles Wizard to install IIS, you get the default installation, which has a minimum set of role services. If you need additional IIS role services, such as Application Development or Health and Diagnostics, make sure to select the check boxes associated with those features in the Select Role Services page of the wizard.



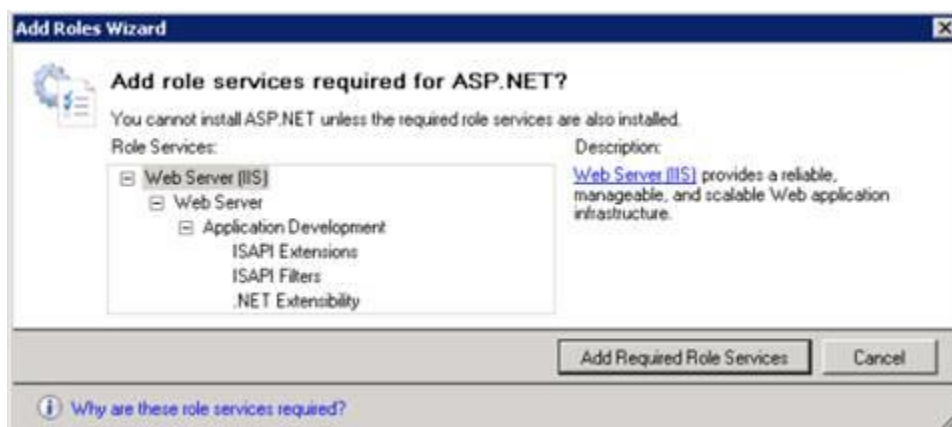
Select the IIS services to be installed on the *Select Role Services* page. Add only the modules necessary. In this case, ASP.NET is selected, and a description of ASP.NET appears in the right pane. Once desired modules are added, click 'Next'.



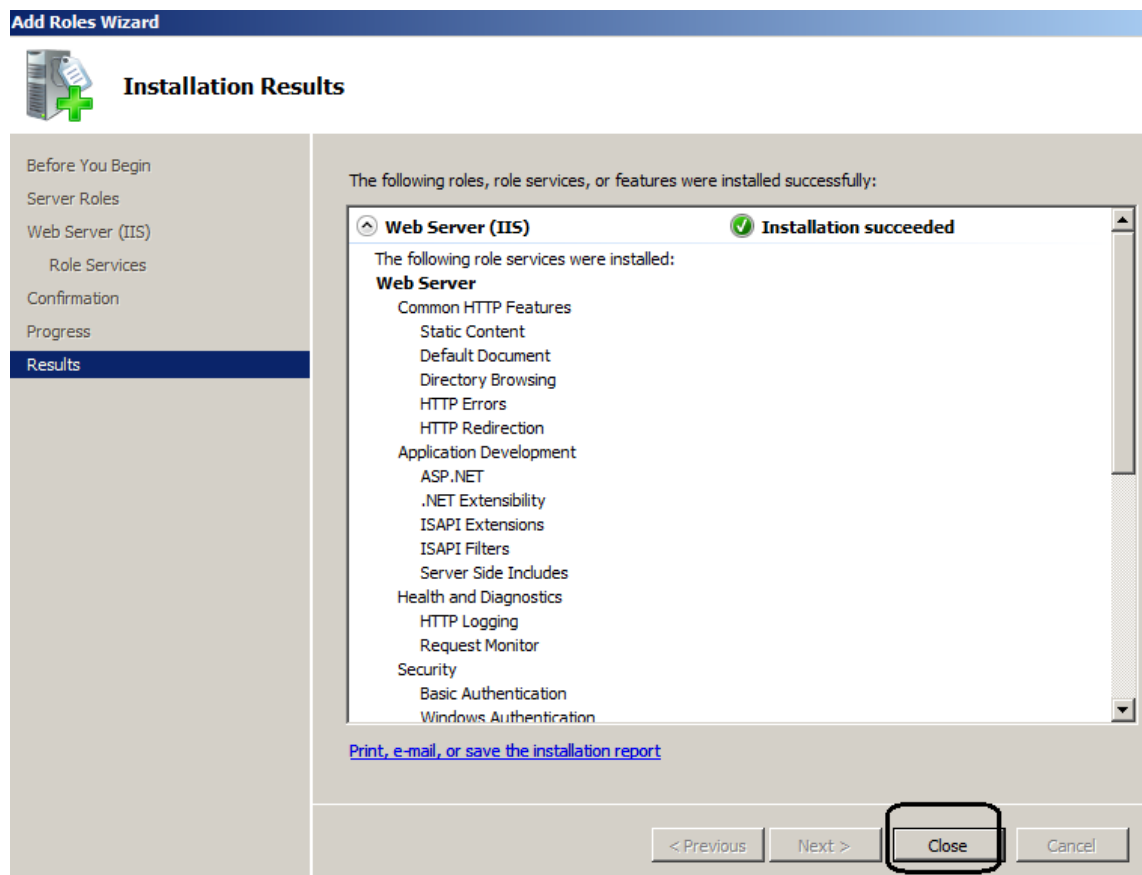
Scroll down for selecting more properties of IIS



Add any required role services.



IIS is now installed with a default configuration for hosting ASP.NET on Windows Server. Click 'Close' to complete the process.



Confirm that the *Web Server* works by using <http://localhost>.



Windows Server 2012

Before You Begin

Ensure that you have administrative user rights on the computer on which you plan to install IIS 8.



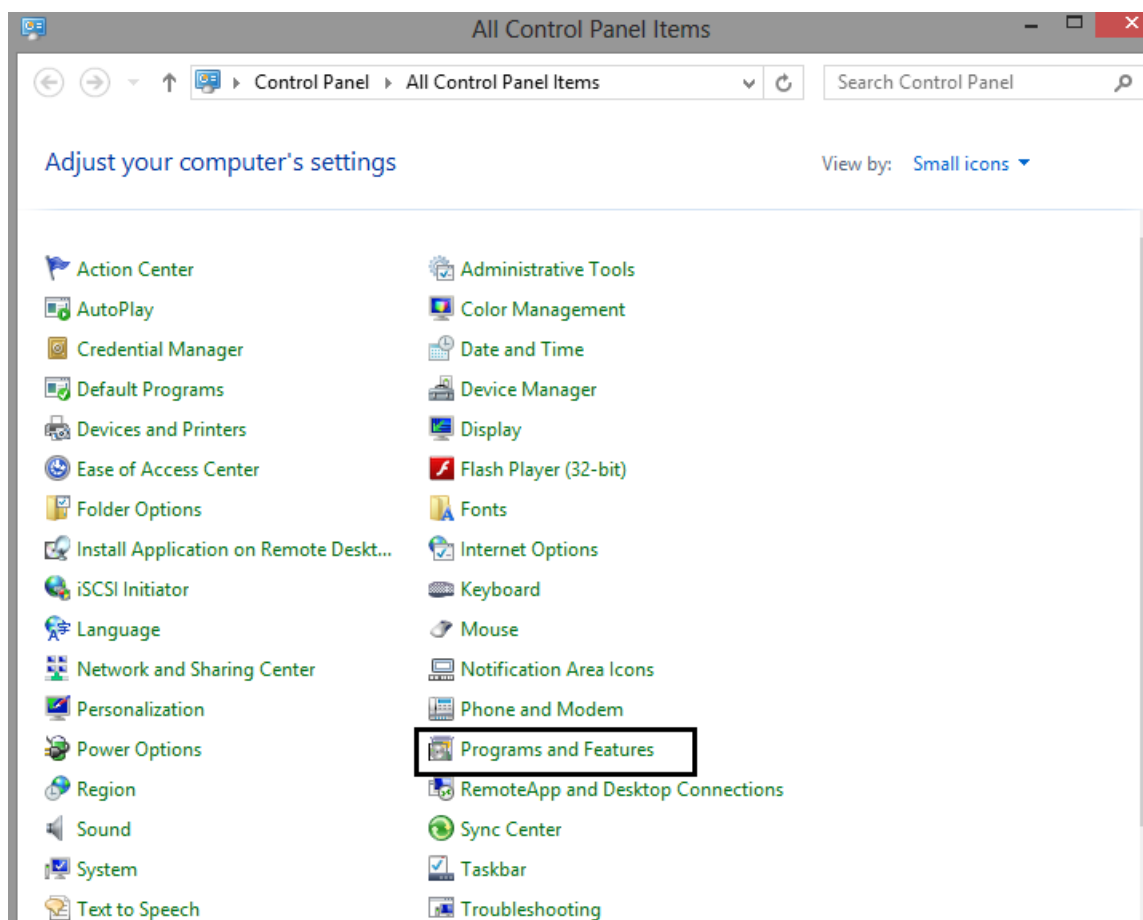
Note that by default, you do not have administrative user rights if you are logged on as a user other than the built-in administrator, even if you were added to the local Administrators group on the computer. Log on either to the built-in administrator account, or explicitly invoke applications as the built-in administrator by using the 'run as' command-line tool.

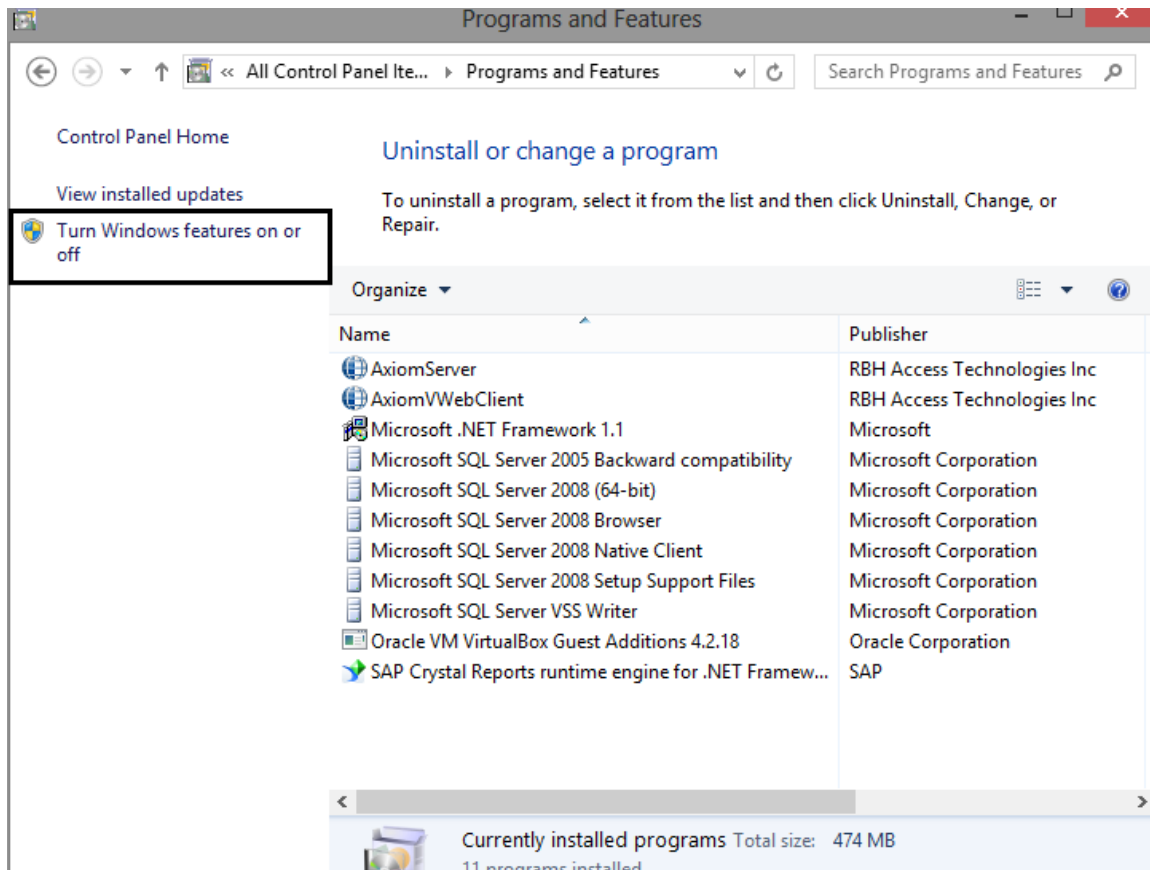


You can run 'run as' /user: administrator cmd.exe so that every application you run from that command line will be elevated, eliminating the need to use the 'run as' syntax from that command line.

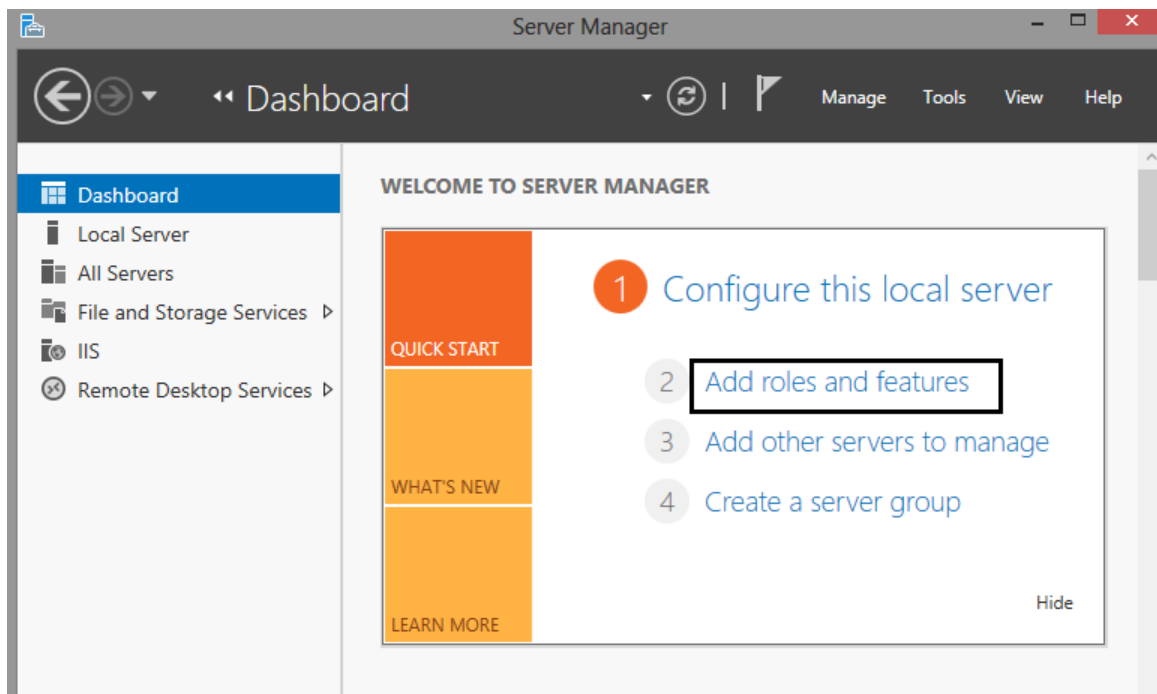
If you are logged on to an account other than the built-in local administrator account, you may see the following security alert dialog box.

Go to *Control Panel* → *Programs and Features* and select *Turn Windows features on or off*

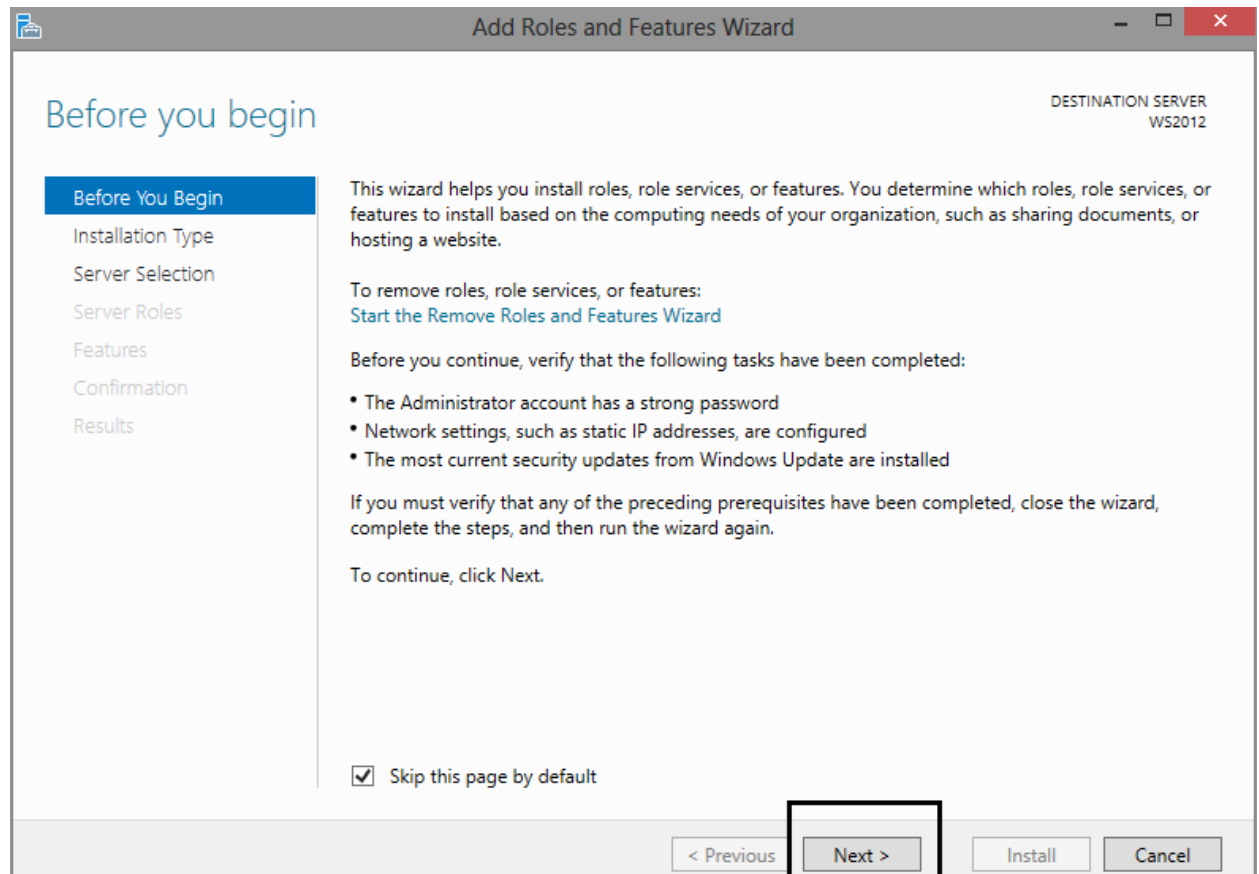




Under *Internet Information Services*, click on Add Roles and features



Follow the wizard.



DESTINATION SERVER
WS2012

Select installation type

Select the installation type. You can install roles and features on a running physical computer or virtual machine, or on an offline virtual hard disk (VHD).

- ☒ **Role-based or feature-based installation**
Configure a single server by adding roles, role services, and features.
- ☐ **Remote Desktop Services installation**
Install required role services for Virtual Desktop Infrastructure (VDI) to create a virtual machine-based or session-based desktop deployment.

DESTINATION SERVER
WS2012

Select destination server

Select a server or a virtual hard disk on which to install roles and features.

- ☒ Select a server from the server pool
- ☐ Select a virtual hard disk

Server Pool

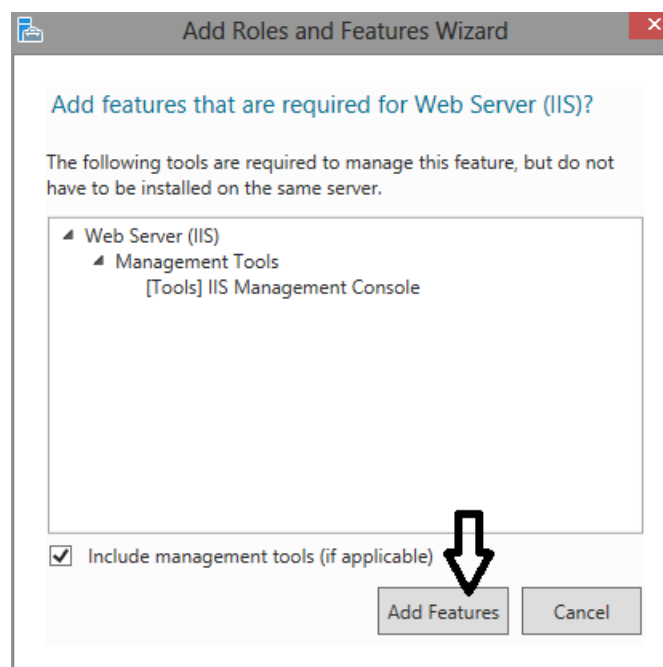
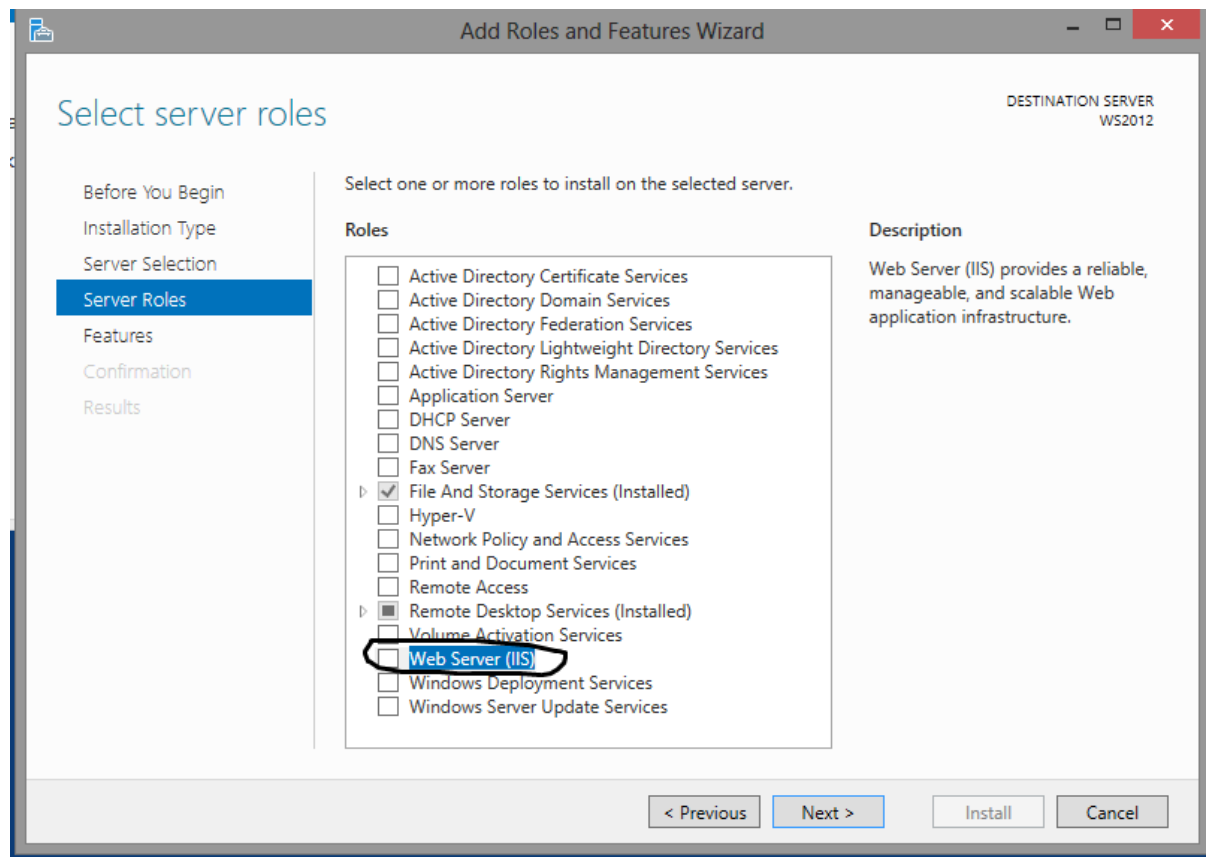
Filter:

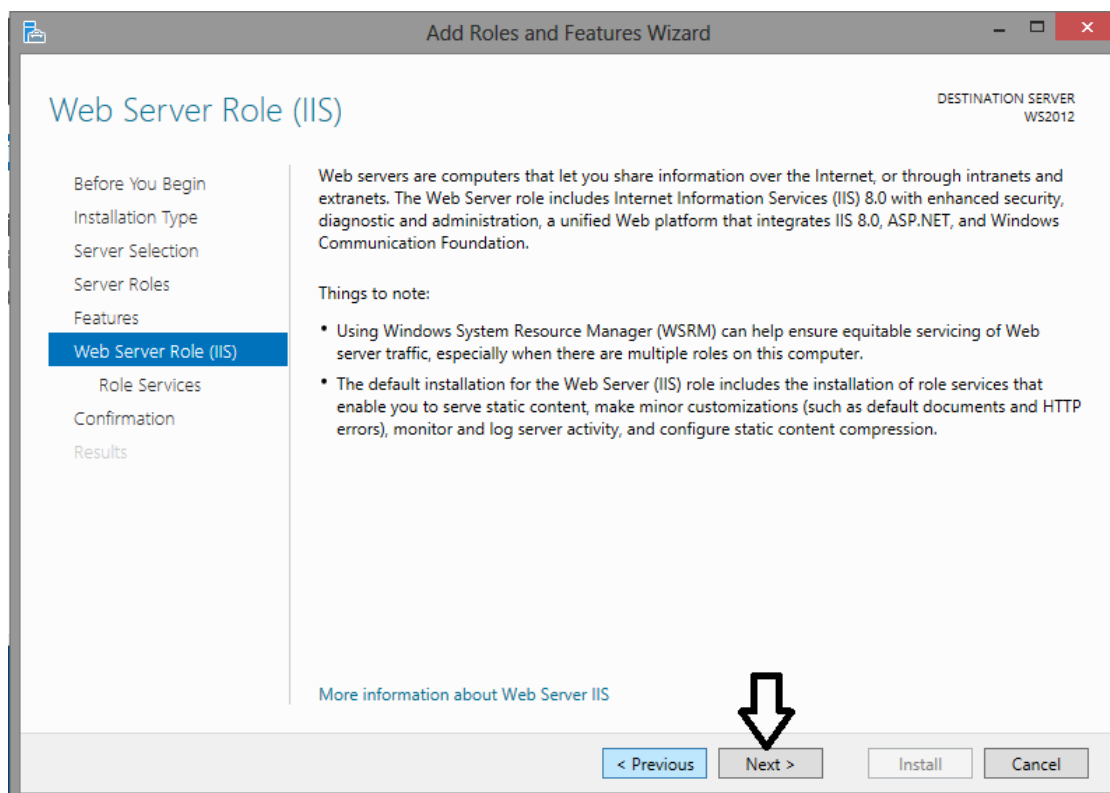
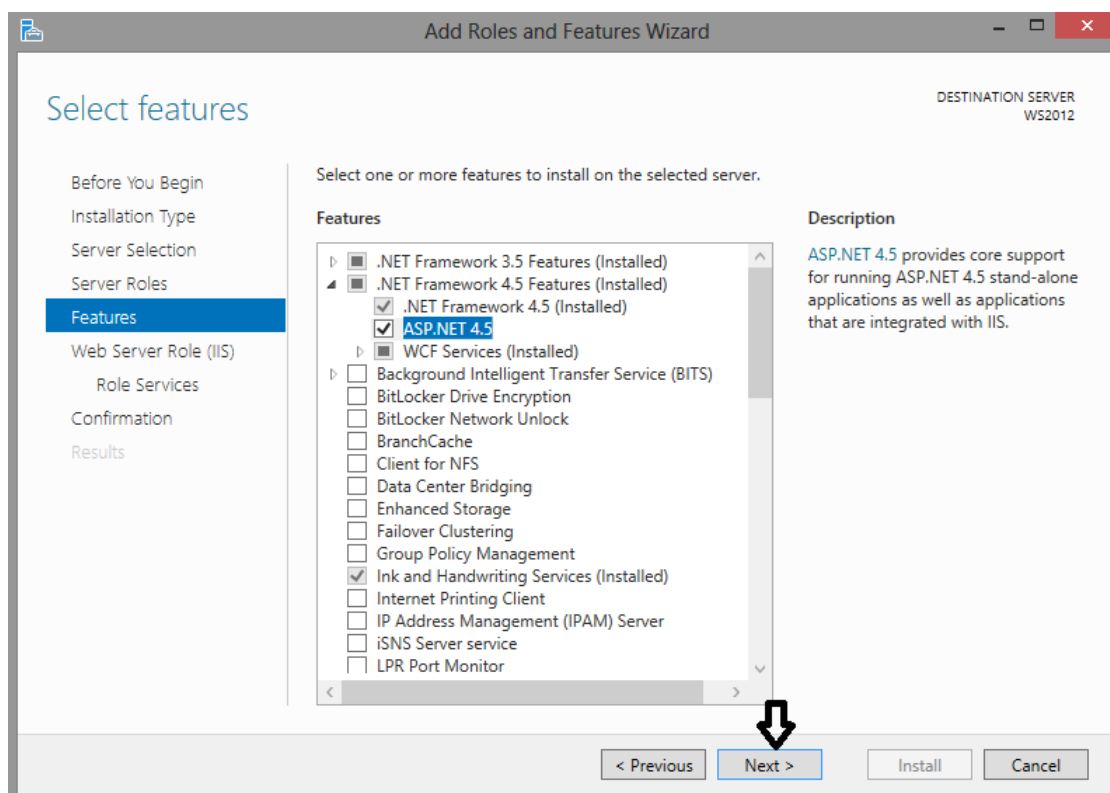
Name	IP Address	Operating System
WS2012	125.100.75.206...	Microsoft Windows Server 2012 Standard

1 Computer(s) found

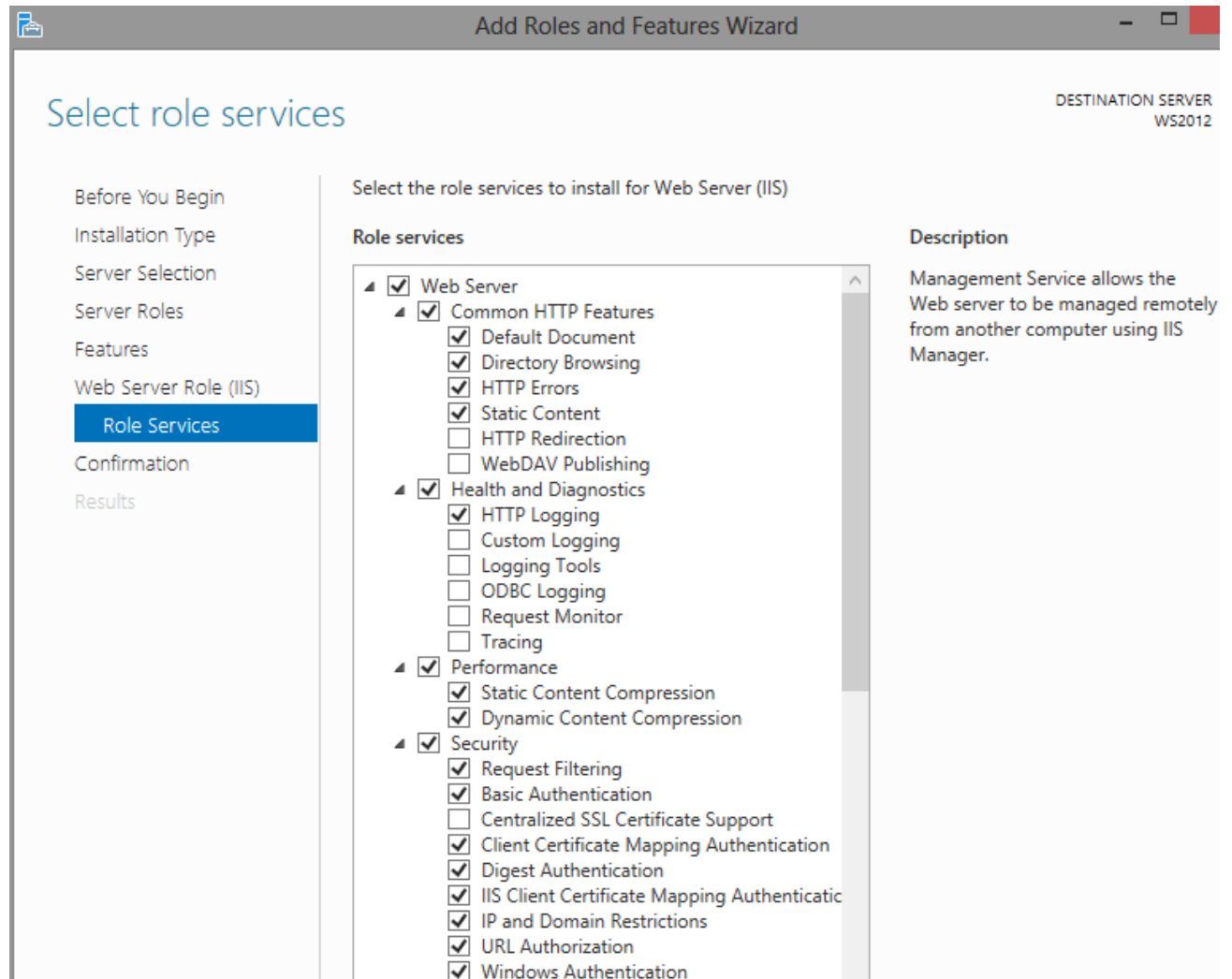
This page shows servers that are running Windows Server 2012, and that have been added by using the Add Servers command in Server Manager. Offline servers and newly-added servers from which data collection is still incomplete are not shown.

Select Web Server (IIS)





Select the features for IIS



Select role services

WS2012

Before You Begin
Installation Type
Server Selection
Server Roles
Features
Web Server Role (IIS)
Role Services
Confirmation
Results

Select the role services to install for Web Server (IIS)

Role services

- ☒ Basic Authentication
- ☐ Centralized SSL Certificate Support
- ☒ Client Certificate Mapping Authentication
- ☒ Digest Authentication
- ☒ IIS Client Certificate Mapping Authentication
- ☒ IP and Domain Restrictions
- ☒ URL Authorization
- ☒ Windows Authentication
- ☒ Application Development
 - ☐ .NET Extensibility 3.5
 - ☒ .NET Extensibility 4.5
 - ☐ Application Initialization
 - ☐ ASP
 - ☐ ASP.NET 3.5
 - ☒ ASP.NET 4.5
 - ☐ CGI
 - ☒ ISAPI Extensions
 - ☒ ISAPI Filters
 - ☐ Server Side Includes
 - ☐ WebSocket Protocol
- ☐ FTP Server
 - ☐ FTP Service
 - ☐ FTP Extensibility
- ☐ IIS Hostable Web Core
- ☒ Management Tools
 - ☒ IIS Management Console
 - ☒ IIS 6 Management Compatibility
 - ☒ IIS Management Scripts and Tools
 - ☒ **Management Service**

Description
Management Service allows the Web server to be managed remotely from another computer using IIS Manager.

< Previous Next > Install Cancel

Click *Install* and *Close* when finished.

Confirm installation selections

DESTINATION SERVER
WS2012

Before You Begin
Installation Type
Server Selection
Server Roles
Features
Web Server Role (IIS)
Role Services
Confirmation
Results

To install the following roles, role services, or features on selected server, click Install.

☐ Restart the destination server automatically if required

Optional features (such as administration tools) might be displayed on this page because they have been selected automatically. If you do not want to install these optional features, click Previous to clear their check boxes.

IIS Management Console
Management Service
IIS Management Scripts and Tools

Web Server

Application Development
ASP.NET 4.5
ISAPI Extensions
ISAPI Filters
.NET Extensibility 4.5

Common HTTP Features
Default Document
Directory Browsing
HTTP Errors
Static Content

Health and Diagnostics
HTTP Logging

[Export configuration settings](#)
[Specify an alternate source path](#)

< Previous Next > **Install** Cancel

Installation progress

DESTINATION SERVER
WS2012

Before You Begin
Installation Type
Server Selection
Server Roles
Features
Web Server Role (IIS)
Role Services
Confirmation
Results

View installation progress

i Starting installation

.NET Framework 4.5 Features
ASP.NET 4.5

Web Server (IIS)

Management Tools
IIS 6 Management Compatibility
IIS 6 Metabase Compatibility

IIS Management Console
Management Service
IIS Management Scripts and Tools

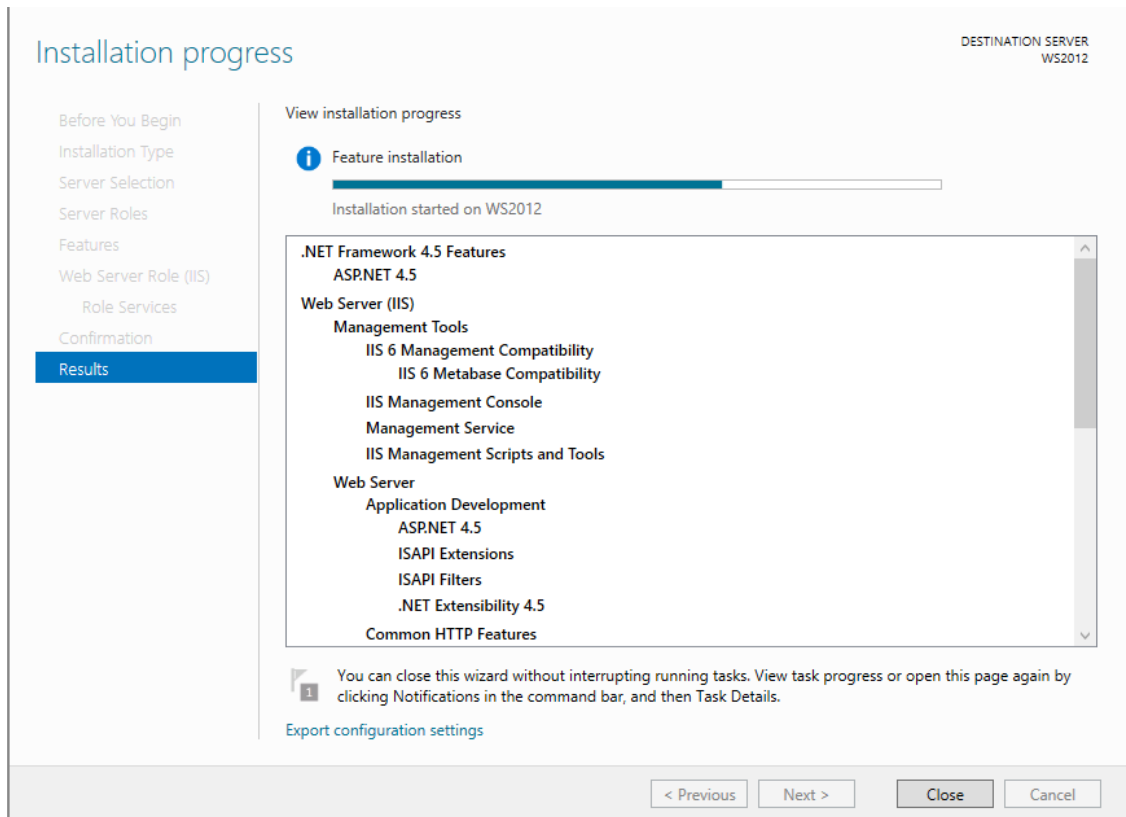
Web Server
Application Development
ASP.NET 4.5
ISAPI Extensions
ISAPI Filters
.NET Extensibility 4.5

Common HTTP Features

i You can close this wizard without interrupting running tasks. View task progress or open this page again by clicking Notifications in the command bar, and then Task Details.

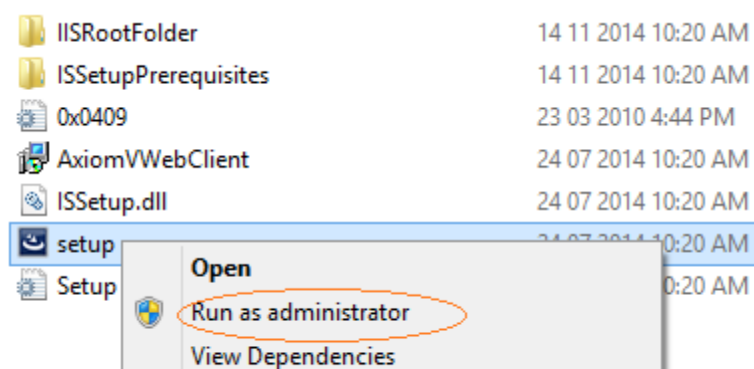
[Export configuration settings](#)

< Previous Next > Install Cancel

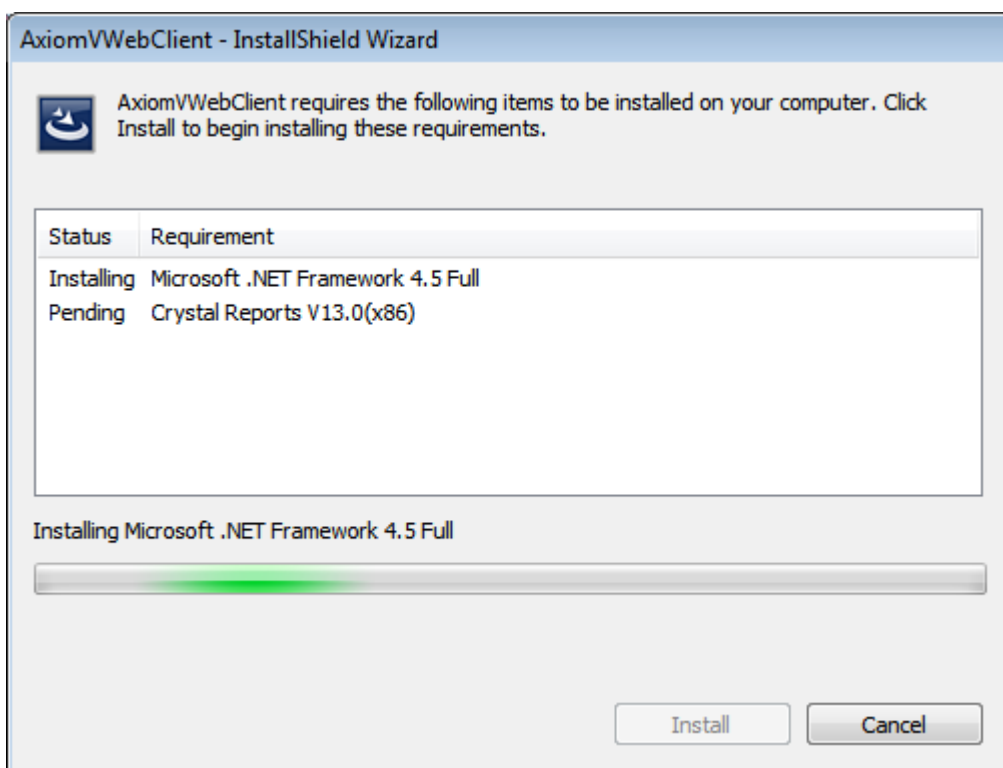


Install AxiomV™ Web Client (AWC) Application

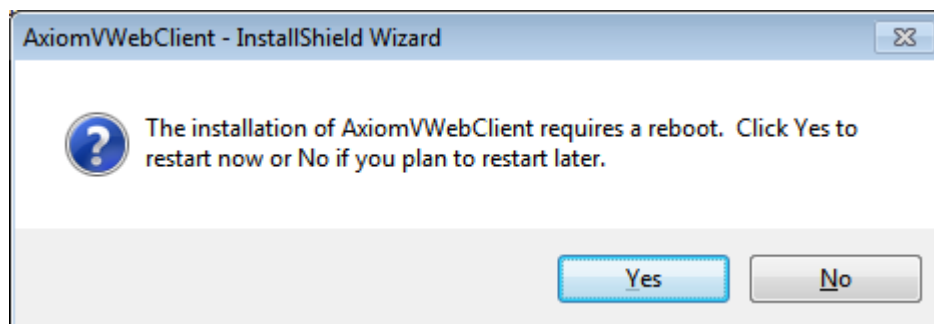
After IIS is installed go to the folder that contains the installation package for AxiomV™ Web Client. Right click on *setup.exe* and *Run as administrator*



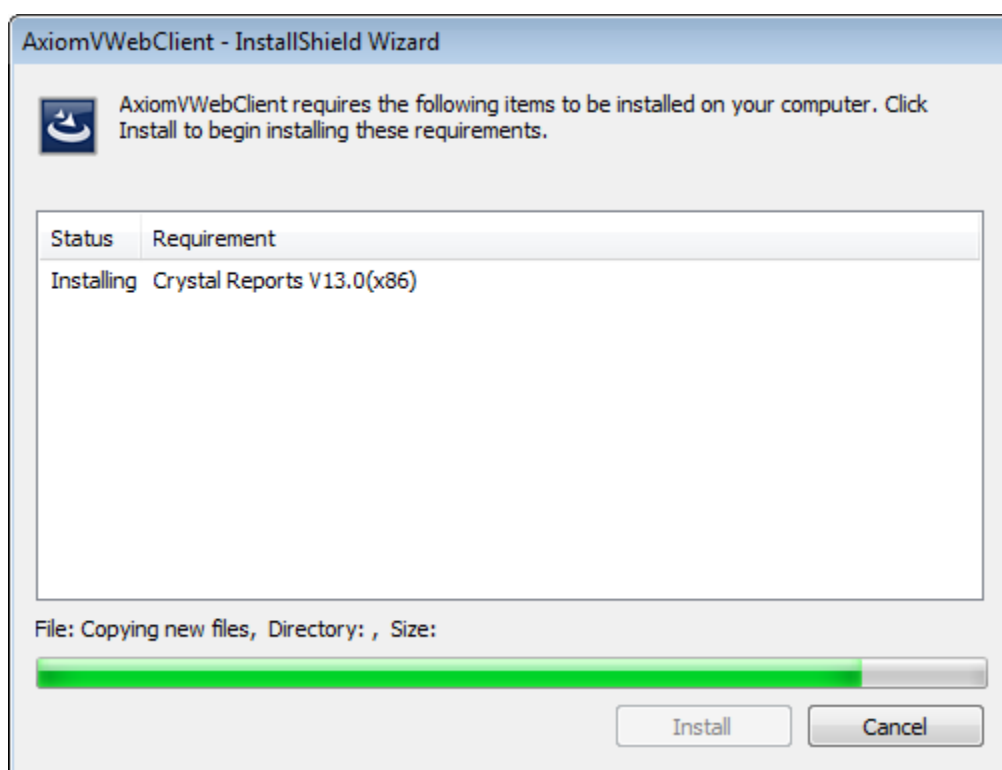
The package will install Microsoft .net Framework 4.5 and Crystal Reports V13.0, if they aren't part of OS already.



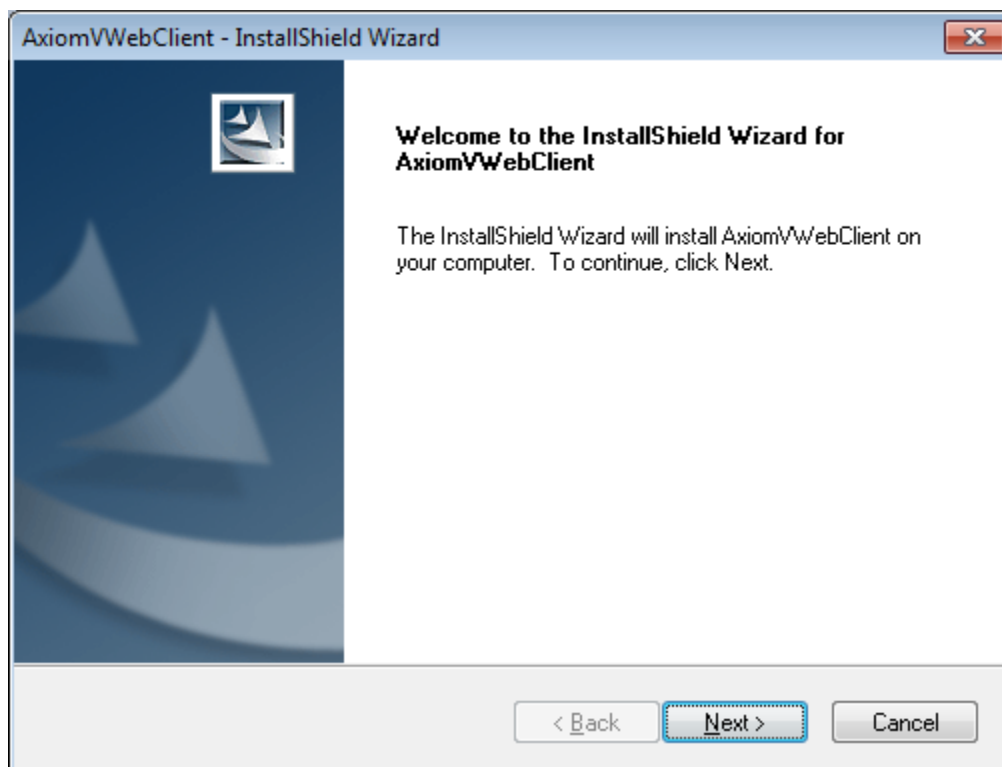
It may require to reboot the system after installation of Microsoft .Net Framework 4.5 depending upon the OS of the machine. If it gives the message to reboot, click Yes , and restart installation (if doesn't restart automatically) after reboot of the machine.



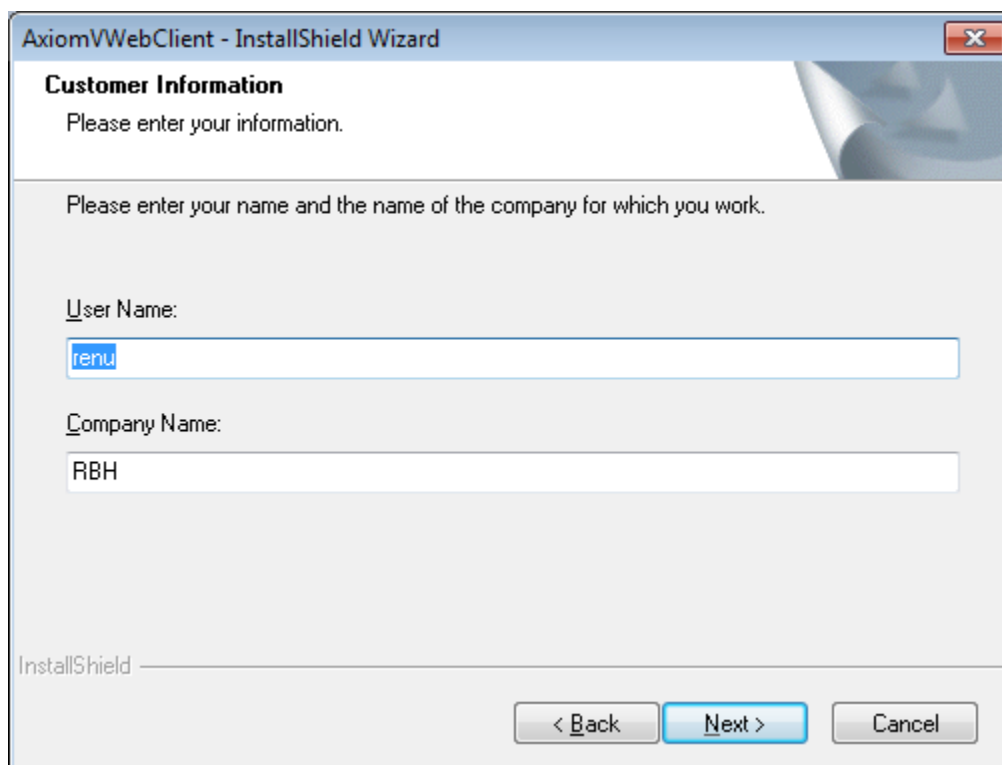
And it will continue installation as required.



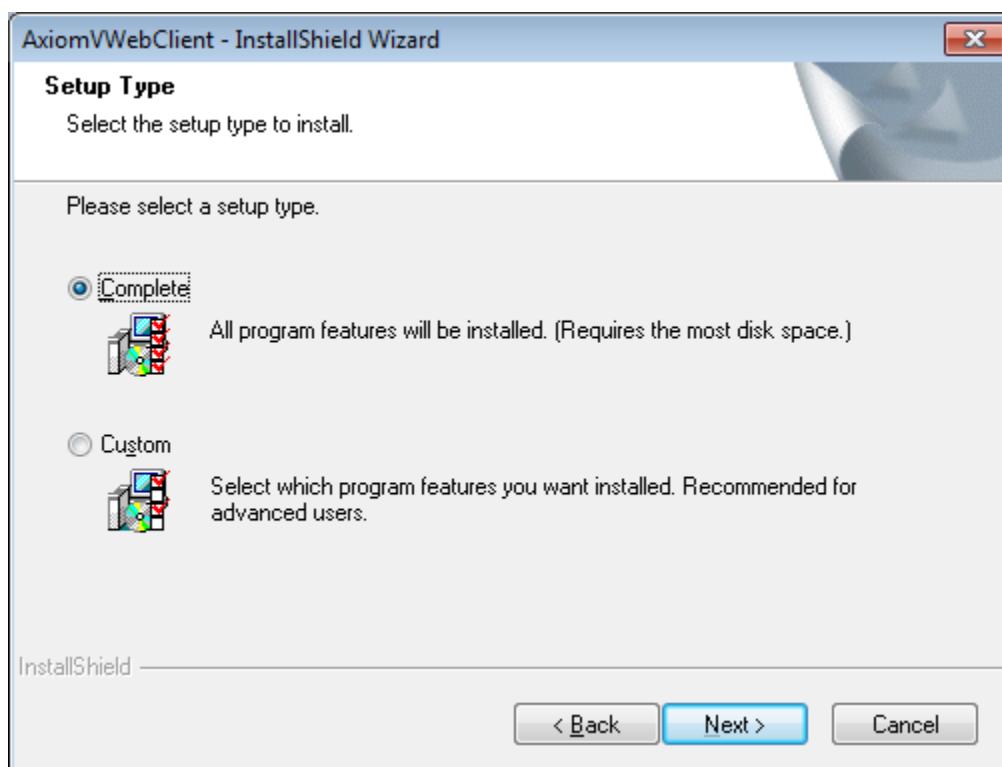
After the installation of prerequisites for AxiomV™ Web client, it will continue installation of AxiomV™ Web client itself.



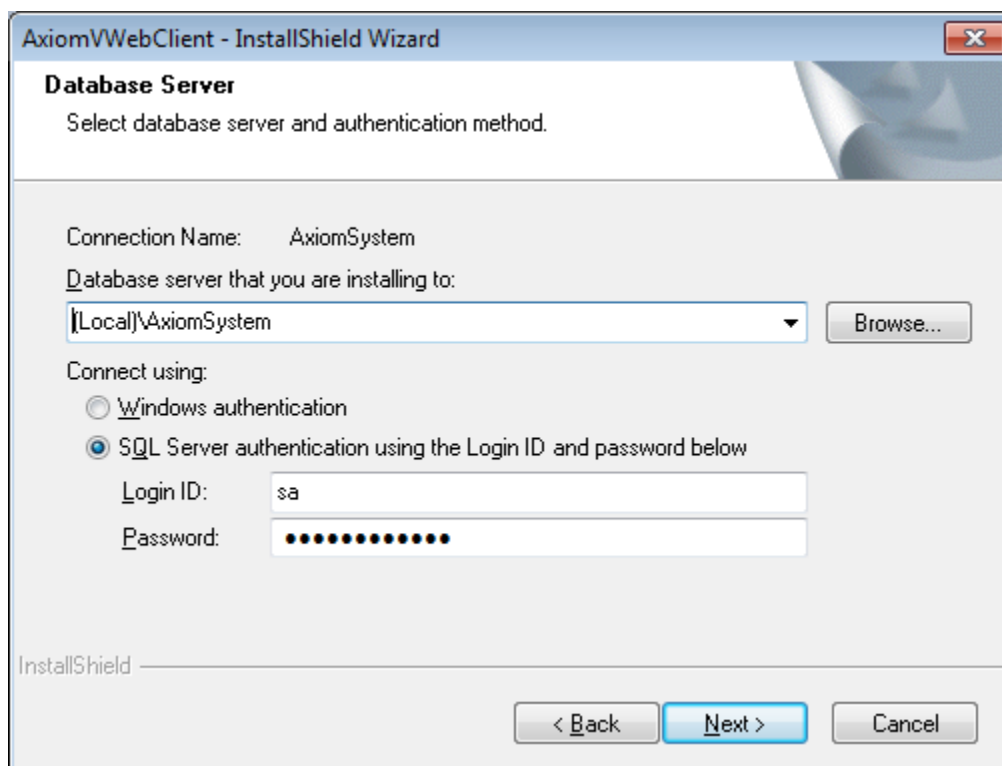
Click on *Next* button to continue.

The image shows the 'AxiomVWebClient - InstallShield Wizard' window at the 'Customer Information' step. The title bar says 'AxiomVWebClient - InstallShield Wizard'. The main heading is 'Customer Information' with the instruction 'Please enter your information.' Below this, it says 'Please enter your name and the name of the company for which you work.' There are two text input fields: the first is labeled 'User Name:' and contains the text 'renu'; the second is labeled 'Company Name:' and contains the text 'RBH'. At the bottom left, it says 'InstallShield'. At the bottom right are three buttons: '< Back', 'Next >' (highlighted with a blue border), and 'Cancel'.

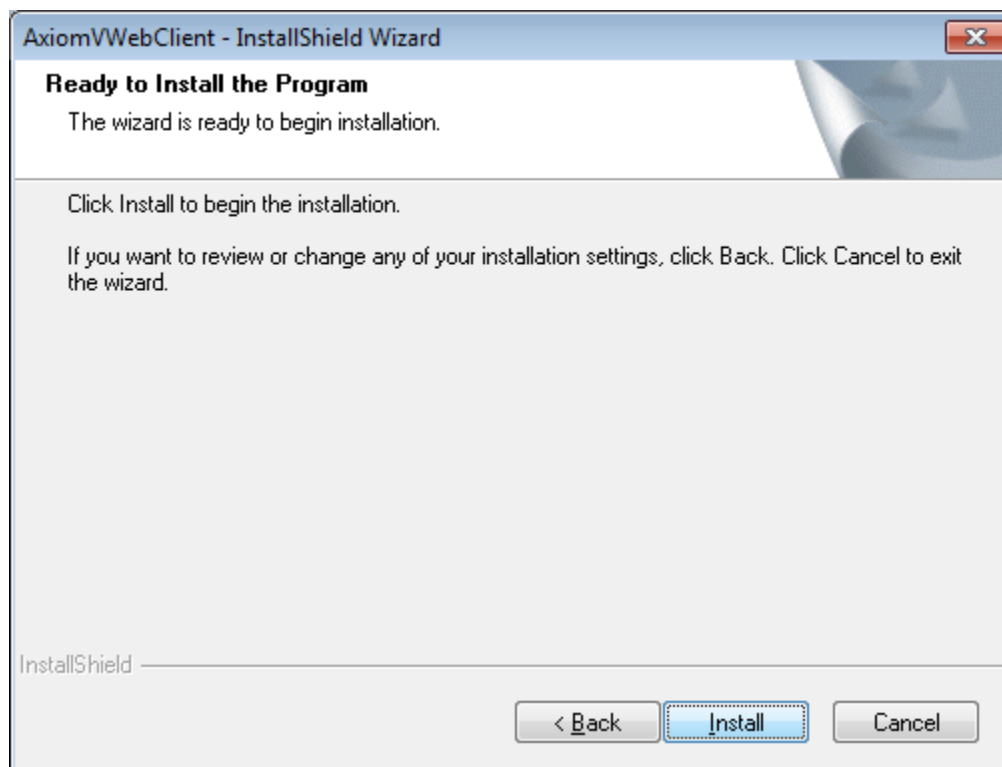
Fill in Company information and click on *Next* again.



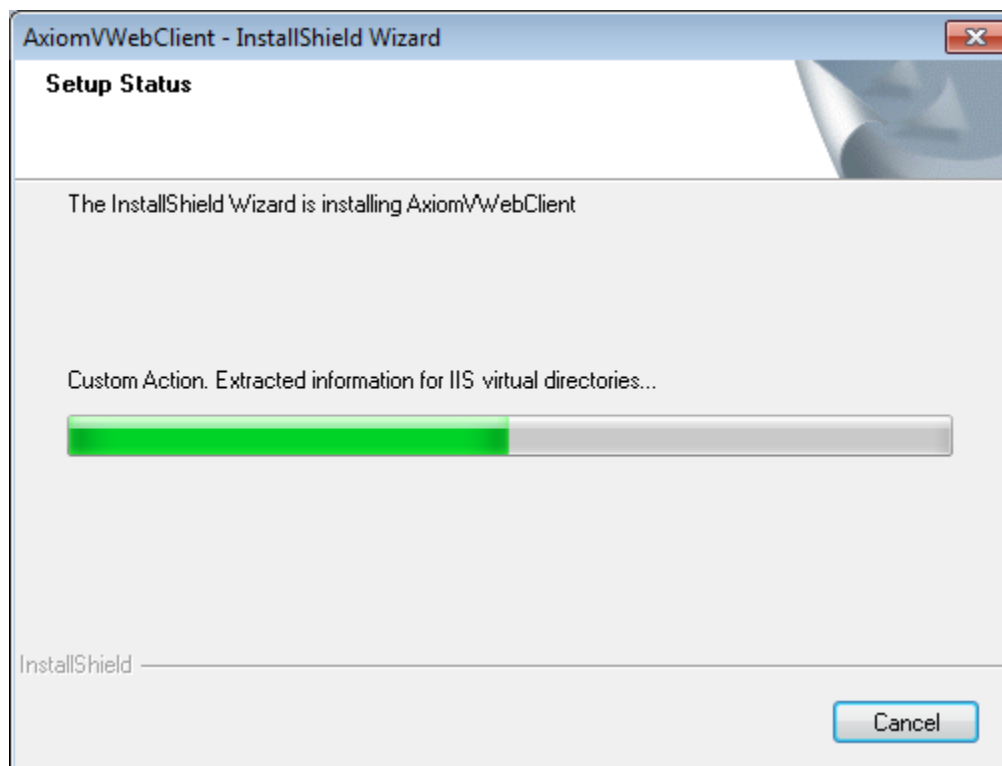
Select Setup type and click *Next*

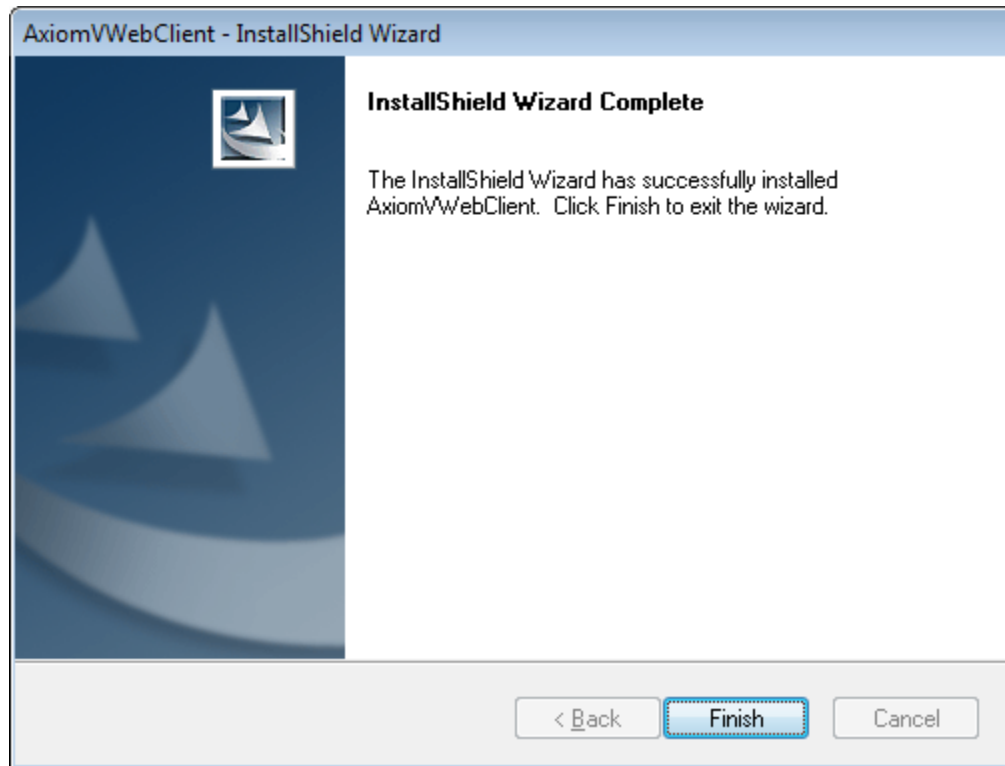


Change the server information, if required and click on *Next* again.



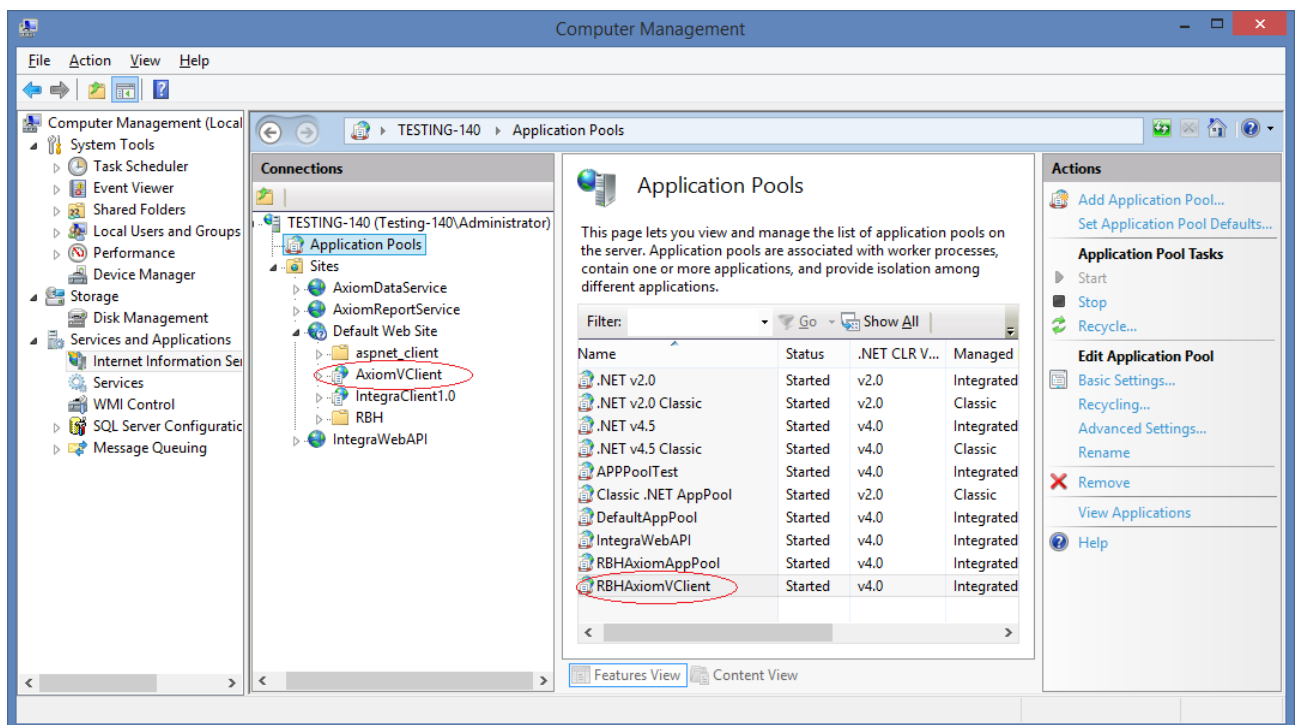
Click *Install* to begin the installation of AWC.



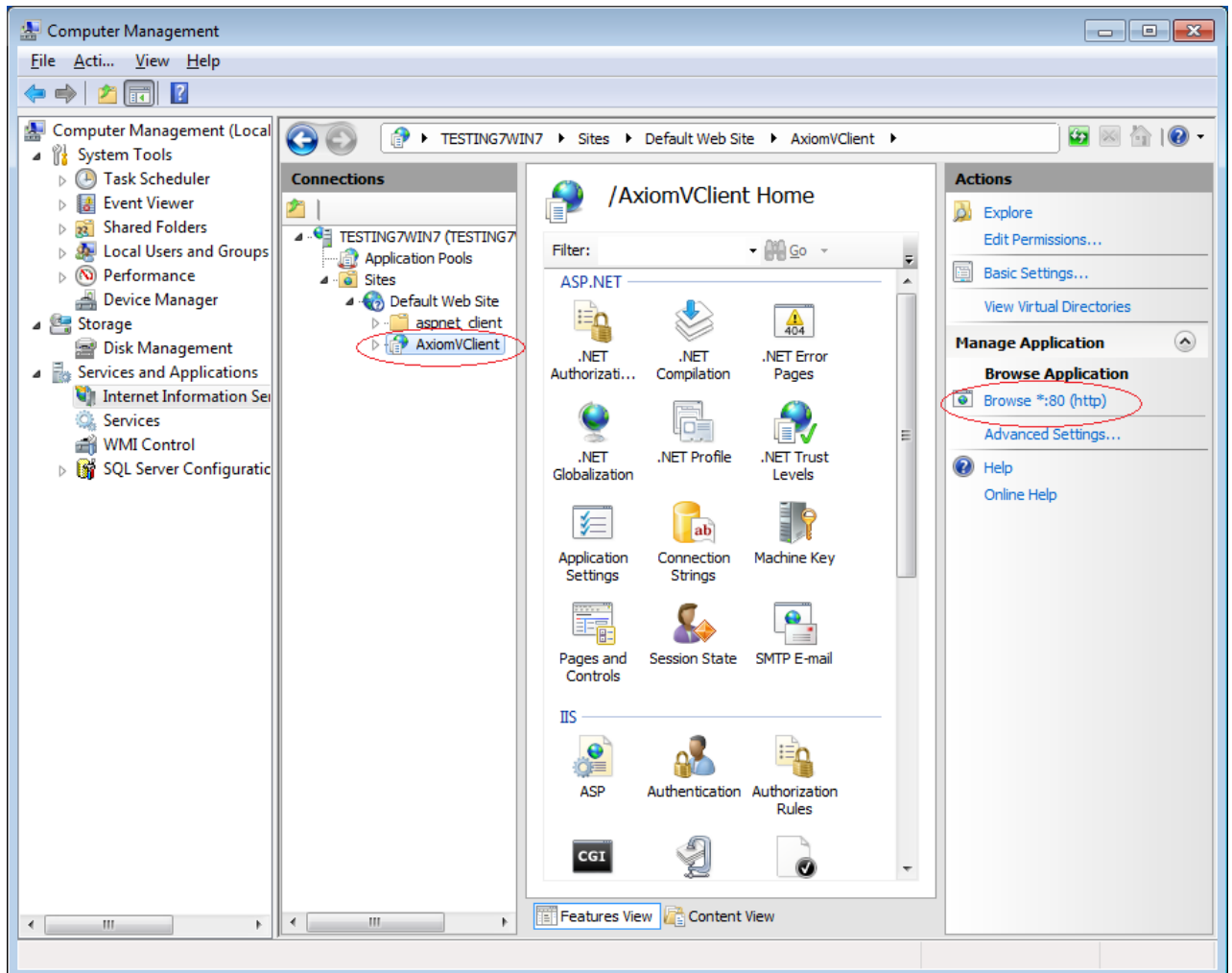


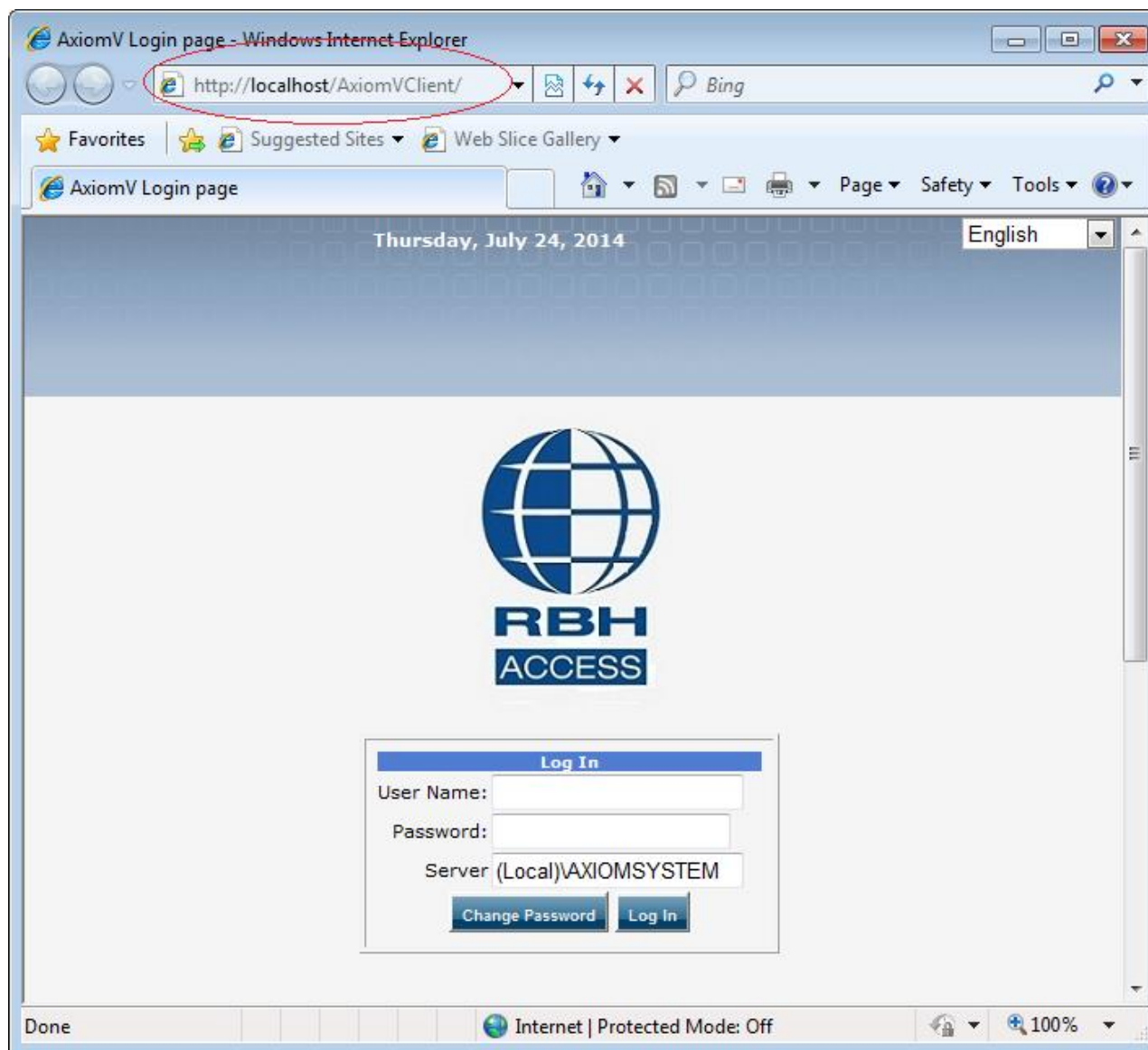
Click *Finish* to complete the installation of AxiomV™ Web client.

Confirm that AxiomV™ Web client installed its own application pool in IIS.

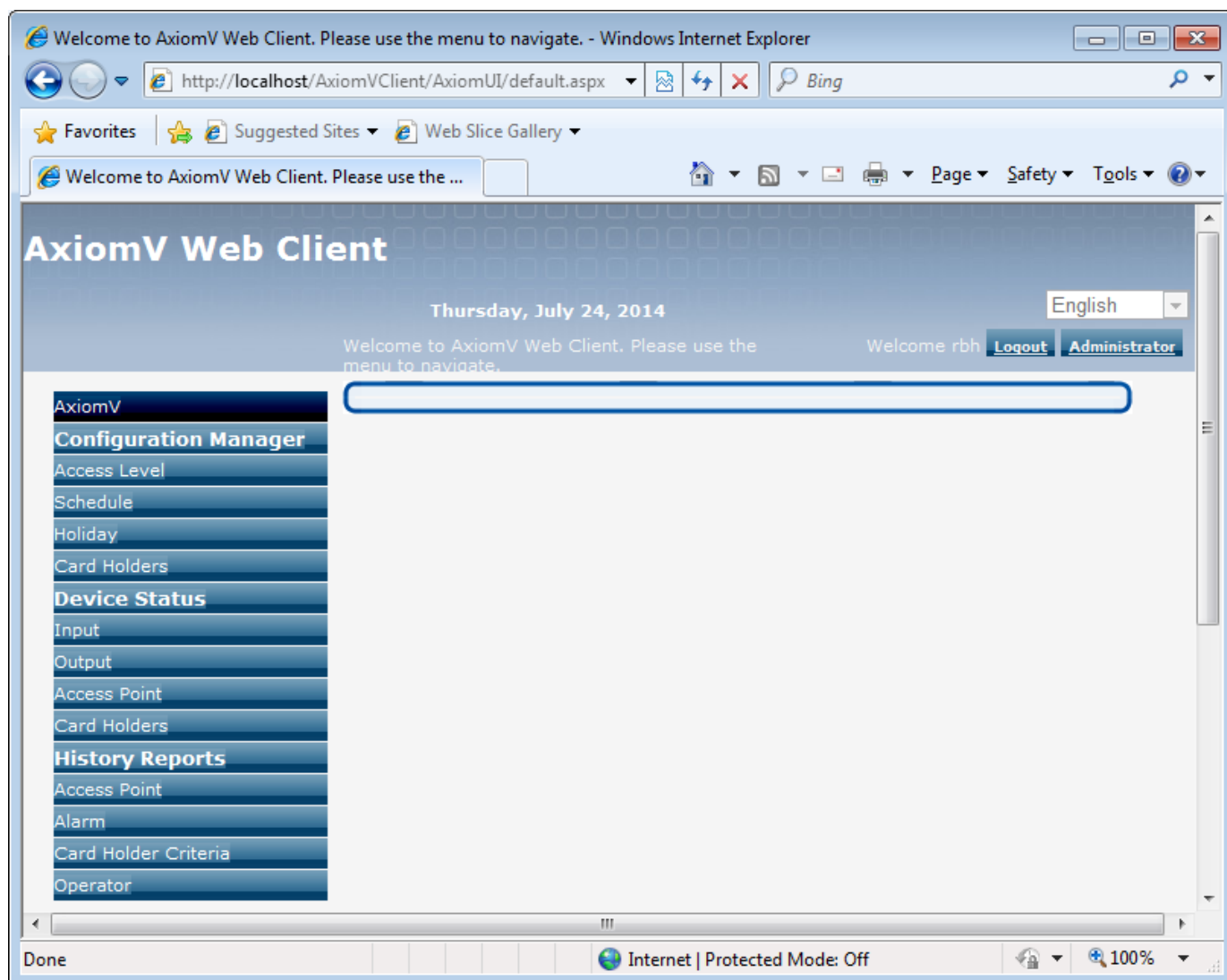


Once finished the installation, user can launch the application, either by clicking on browse for AxiomVClient in internet Information manager or tying in <http://yourwebserver/AxiomVClient> in web browser.



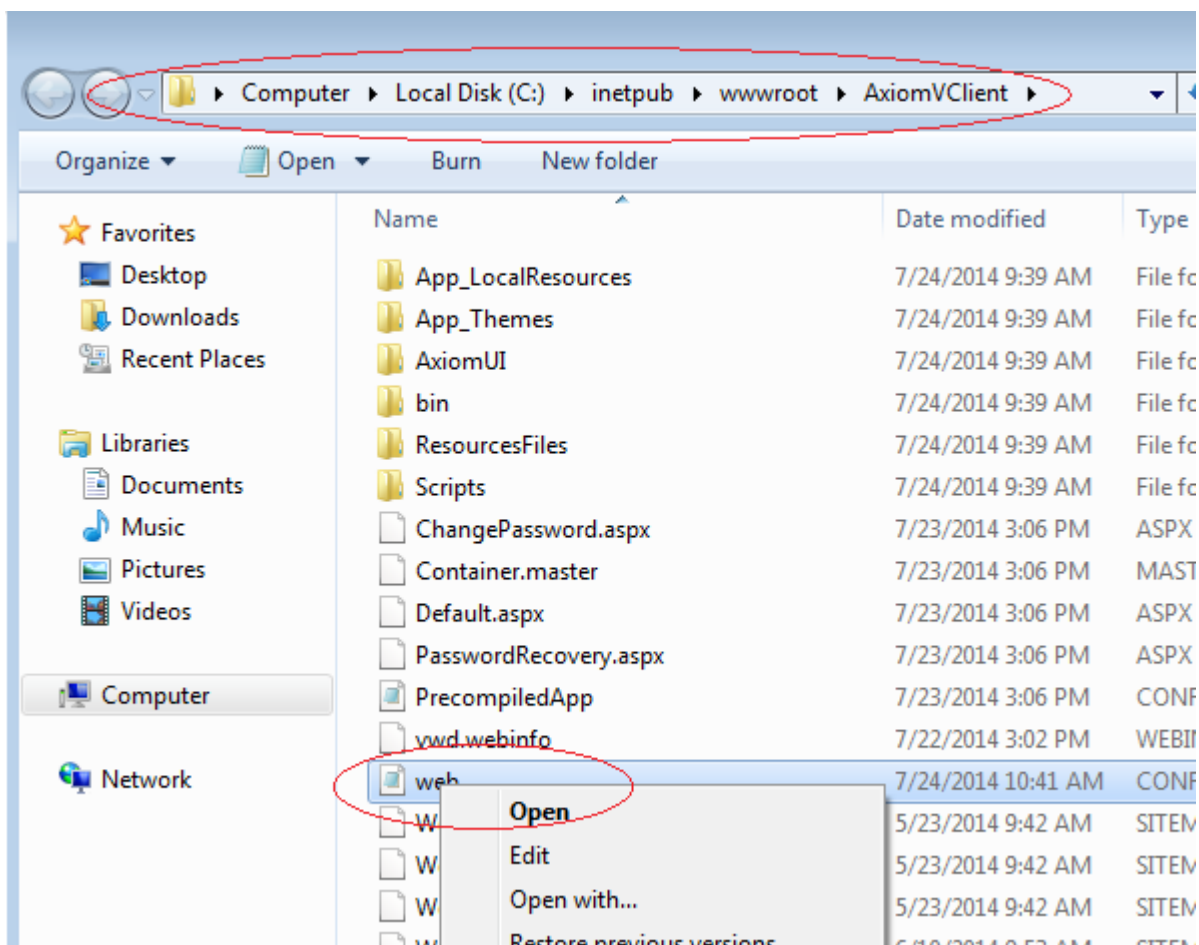


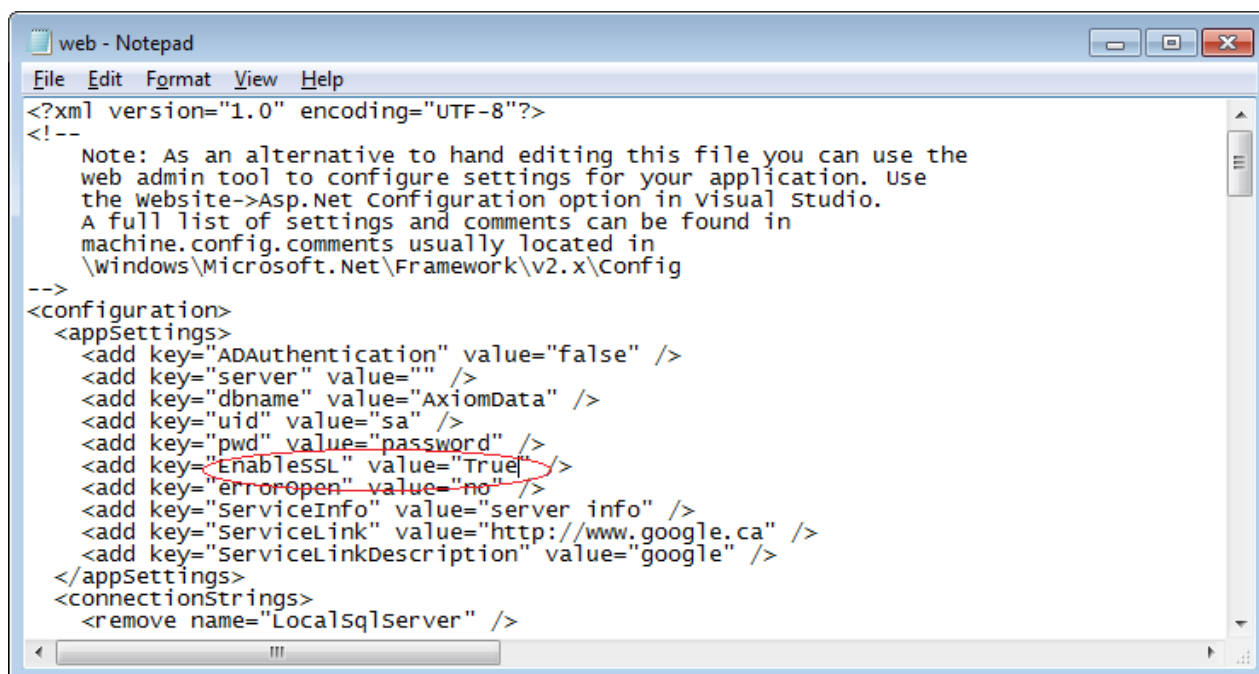
Enter the User Name and Password and click on *Log In* to launch application.



Configure IIS for SSL operation

If SSL Security is required, user needs to enable SSL = True in web.config file, which is in installation folder.

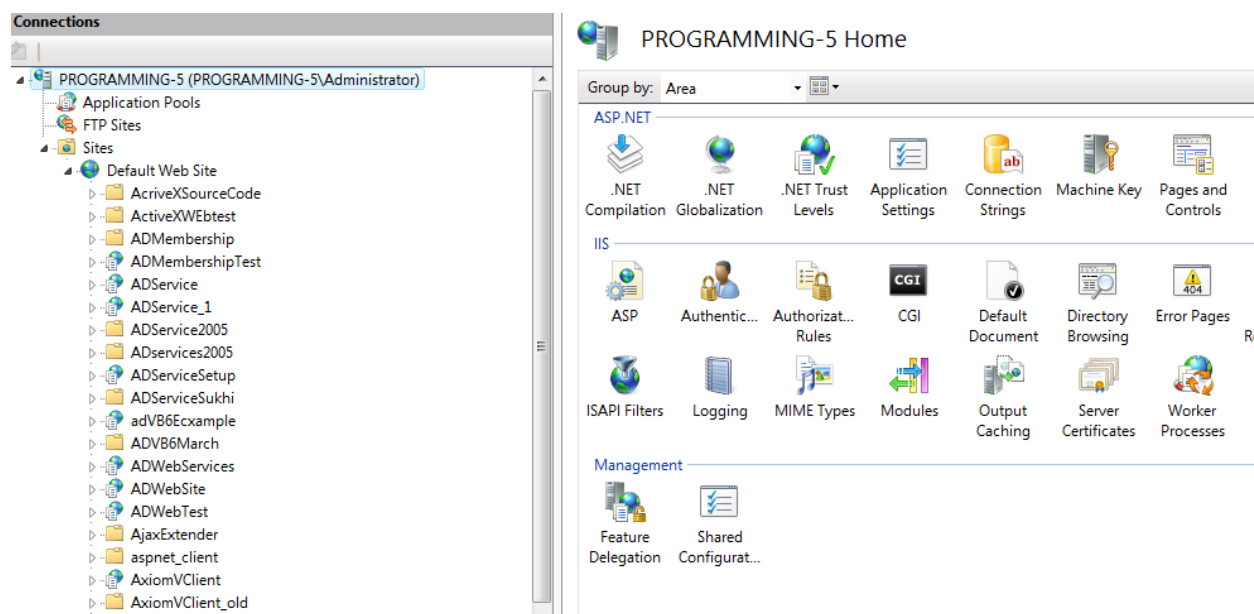




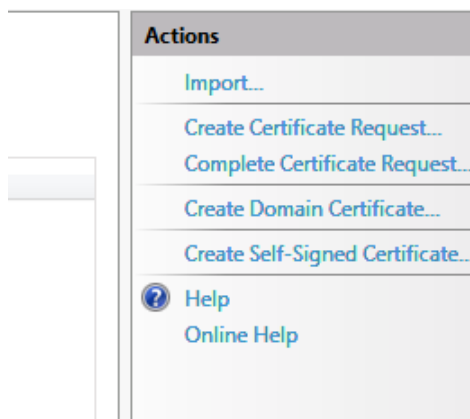
The user should also have a *SSL Certificate* and have it assigned on IIS.

In order to use SSL you have to have a certificate from Verizign or some other company. Follow the steps described below.

Select the root of IIS and click on Server Certificates on the right side.



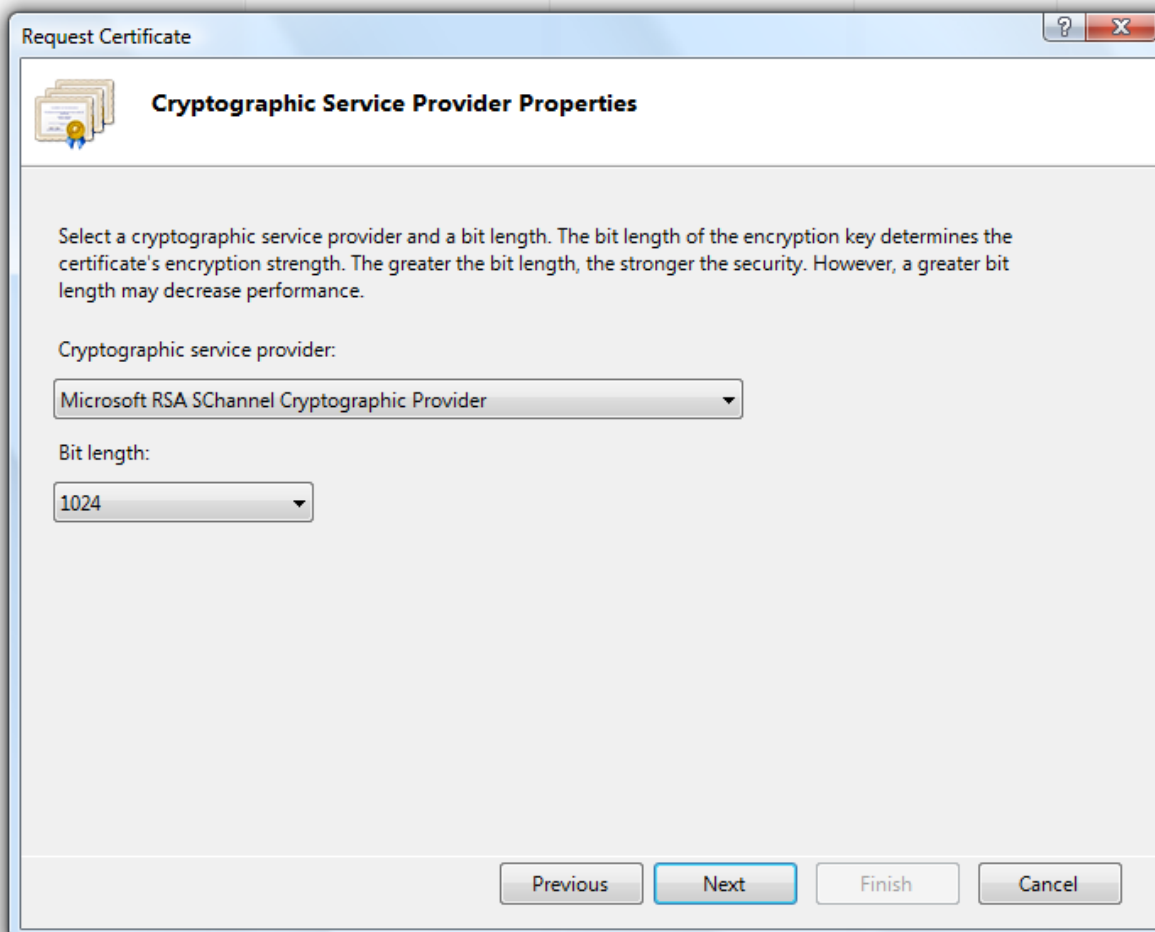
Then create a certificate request.



Follow the wizard, filling in the required information.

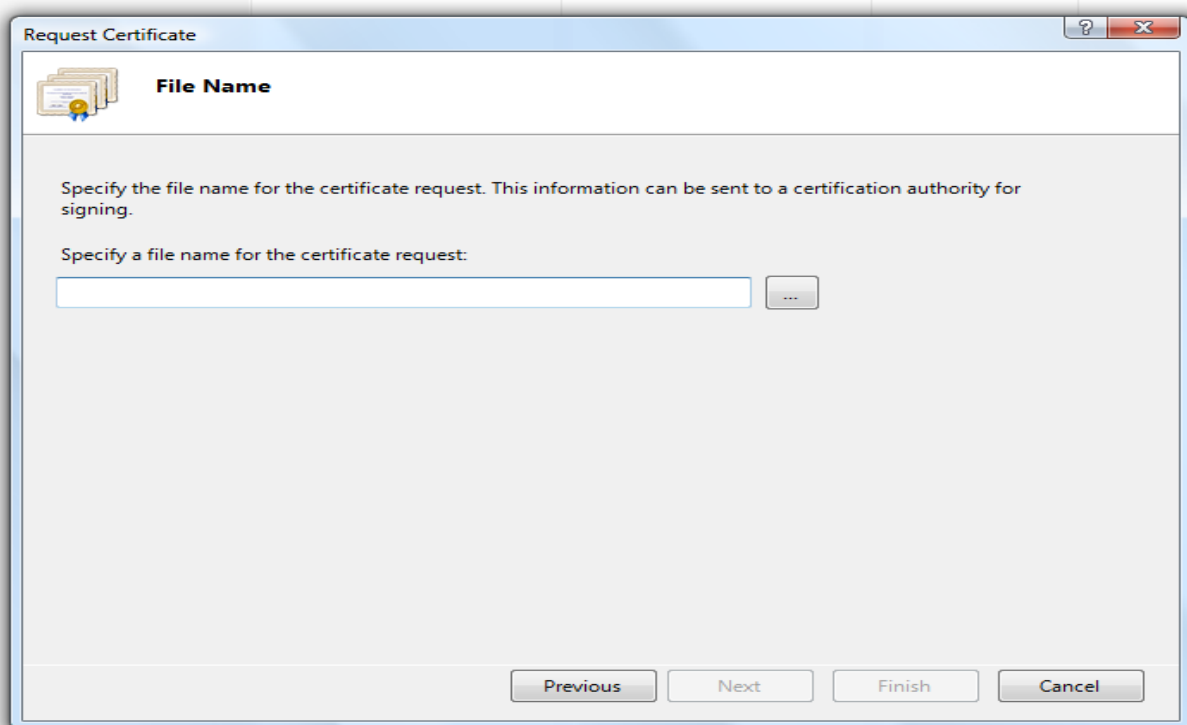
A screenshot of a 'Request Certificate' wizard window. The window has a title bar with a question mark and a close button. The main content area is titled 'Distinguished Name Properties' and contains a text box with the instruction: 'Specify the required information for the certificate. State/province and City/locality must be specified as official names and they cannot contain abbreviations.' Below this, there are several input fields: 'Common name:' with the value 'Compay name', 'Organization:' with the value 'Compay', 'Organizational unit:' with the value 'Unit', 'City/locality' with the value 'city', 'State/province:' with the value 'ON', and 'Country/region:' with a dropdown menu showing 'CA'. At the bottom of the window, there are four buttons: 'Previous', 'Next', 'Finish', and 'Cancel'. The 'Next' button is highlighted in blue.

Click 'Next'.

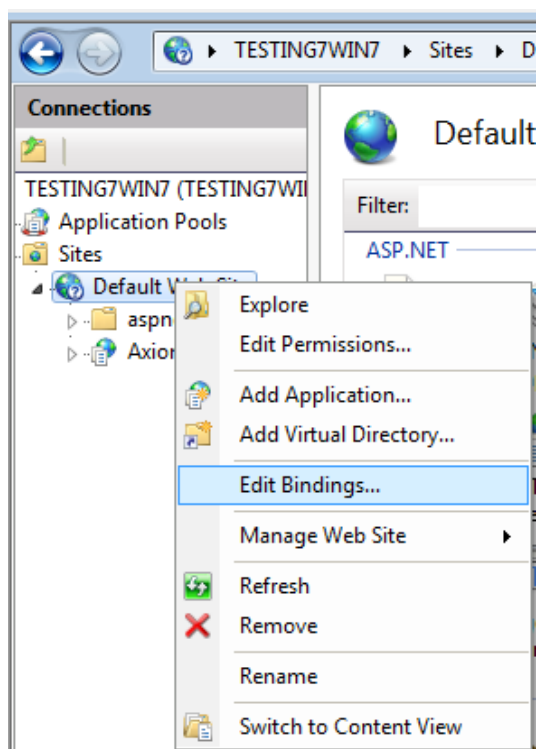


Click 'Next' after selecting the *Cryptographic service provider*.

Select the file you got from the *Cryptographic service provider* company that provided you with the certification.

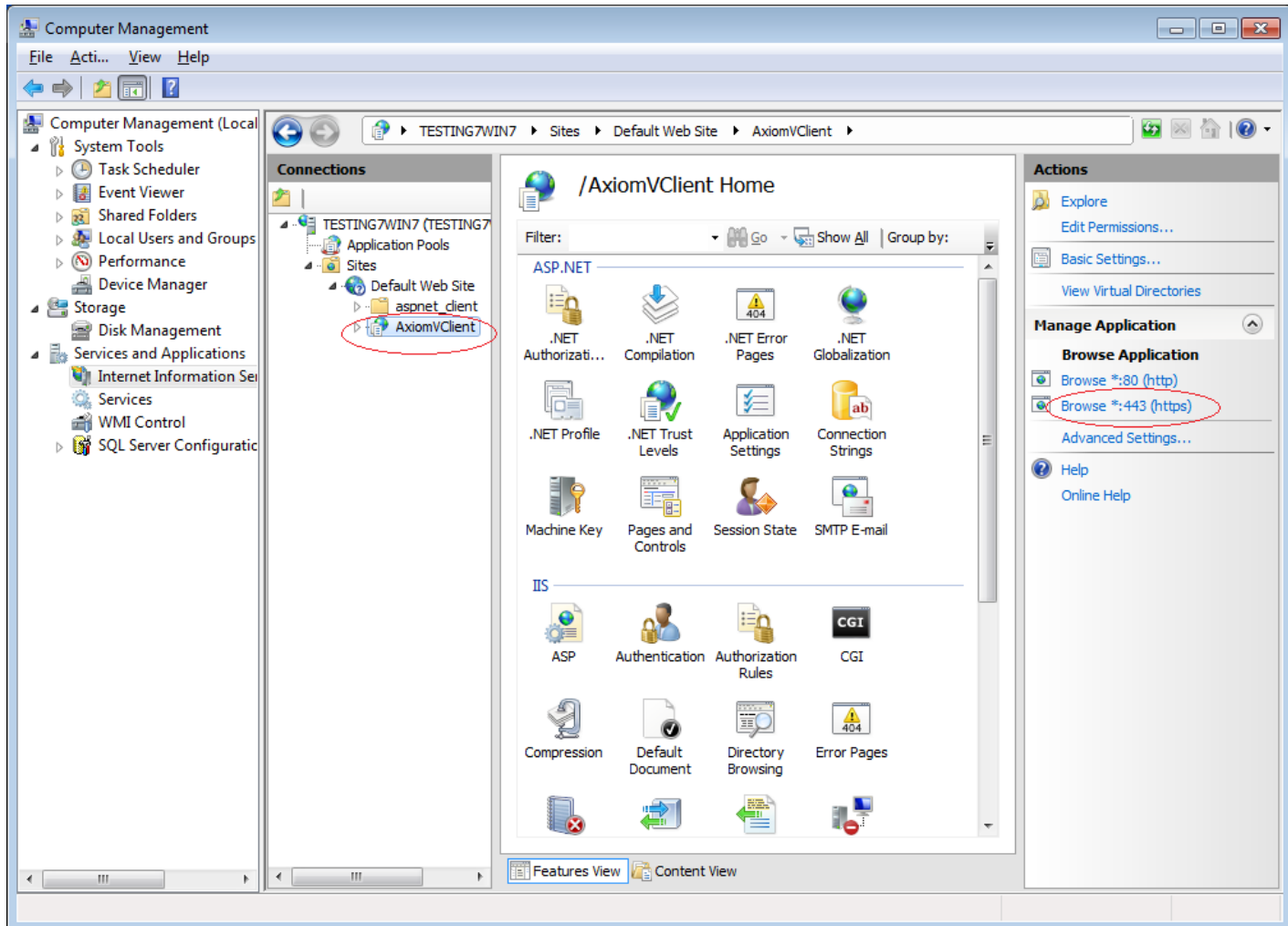


Once the certification is created, assign it to Default web site by right clicking and clicking on *Edit Bindings...*

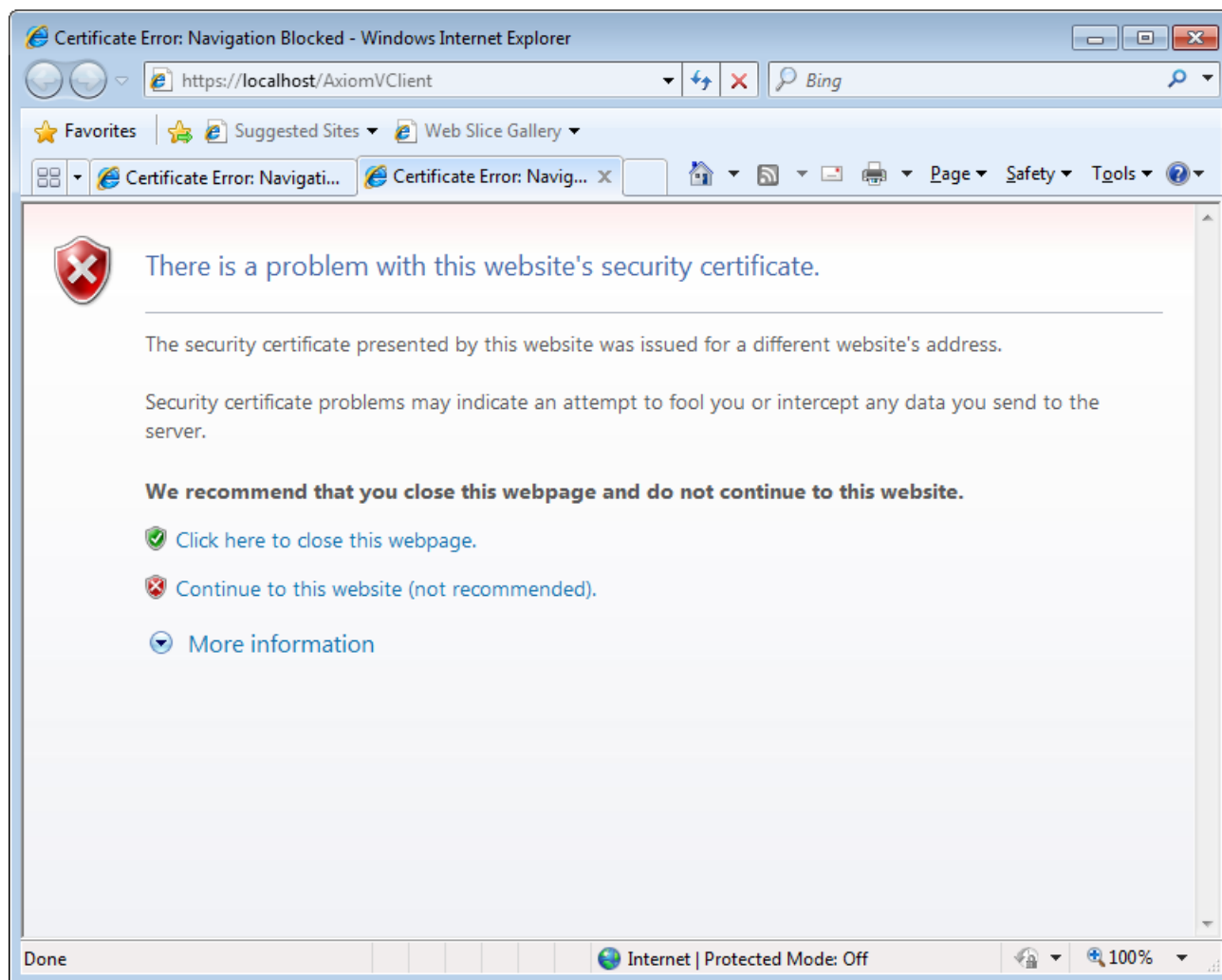


Follow the wizard to bind certificate added through *Create Certificate Request* to default site and all dependent programs (AxiomVClient)

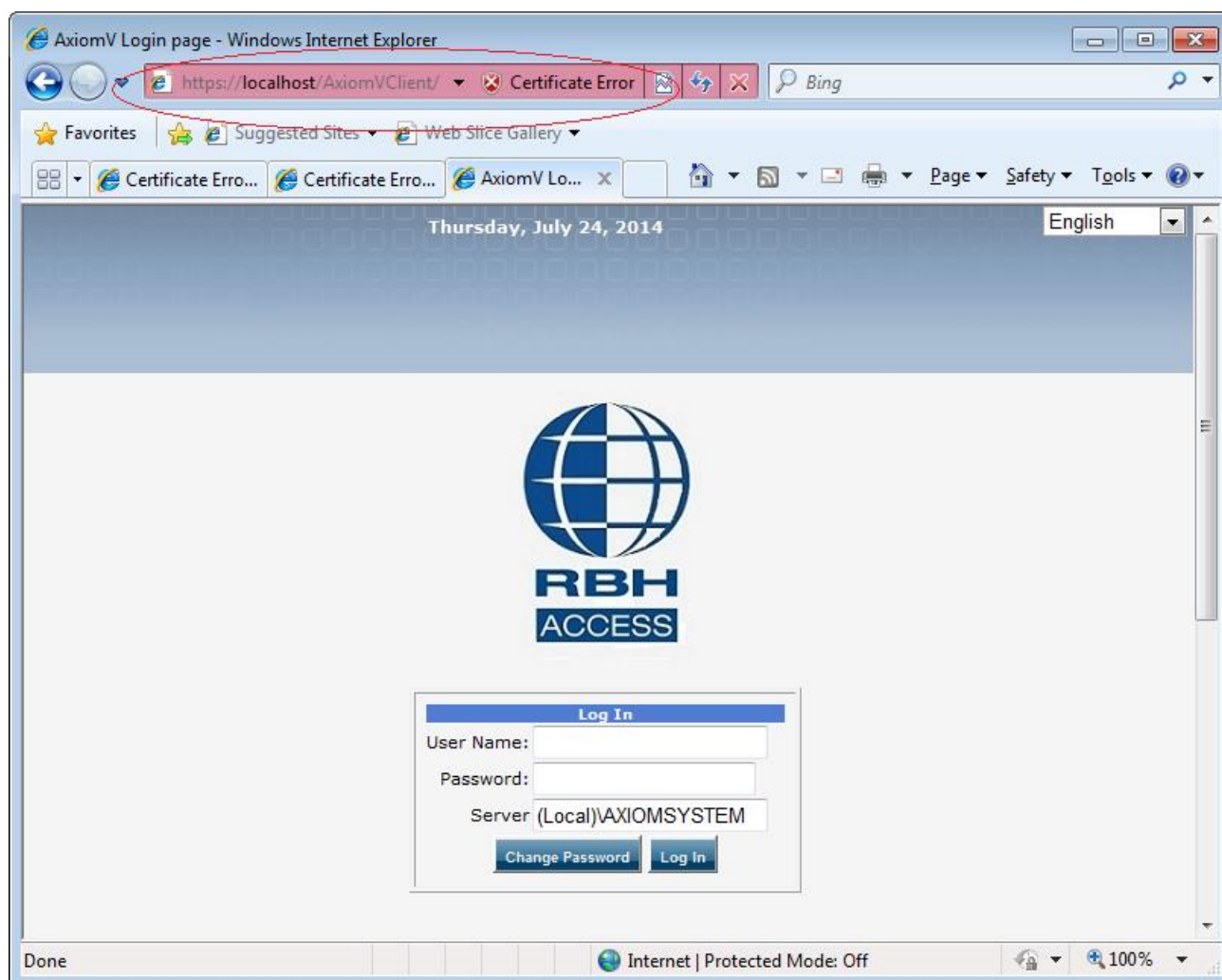
Now the AWC will be browsing through https port 443, instead of http port 80.



For self created certificate (for demo), once browse through https

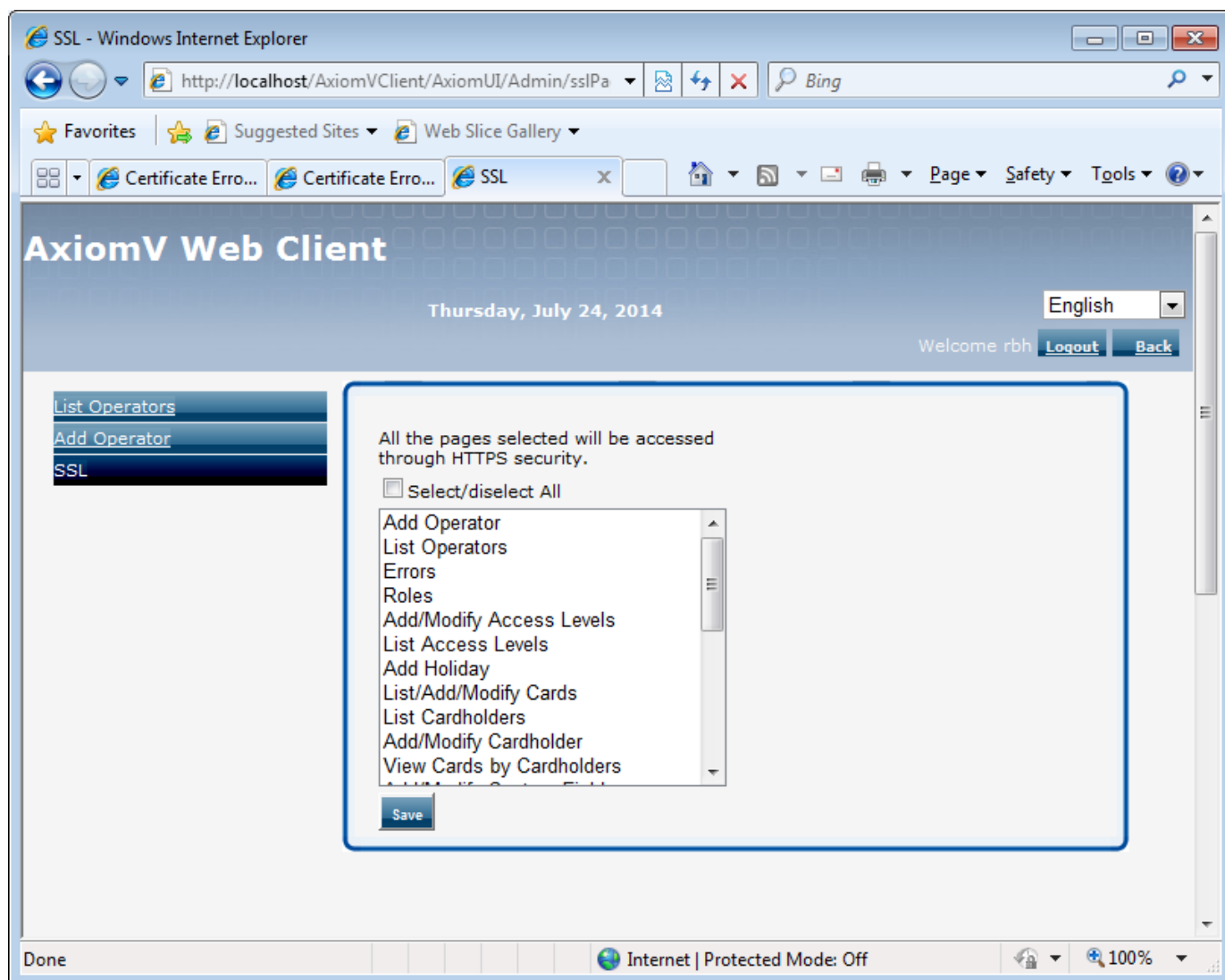


Click on *Continue to this website*

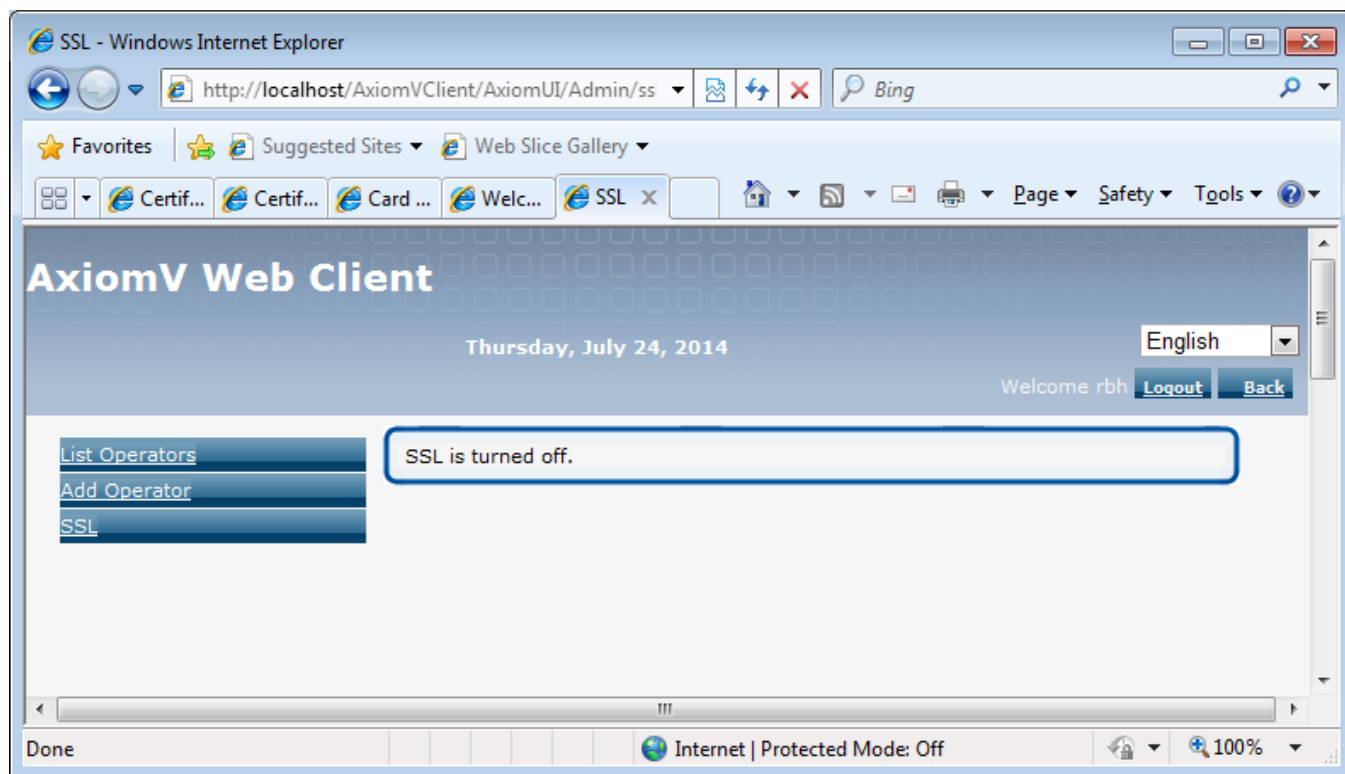


And the application will go through https.

The pages which should go through https can be set in *SSL tab* under *Administration* in AxiomV web client application.

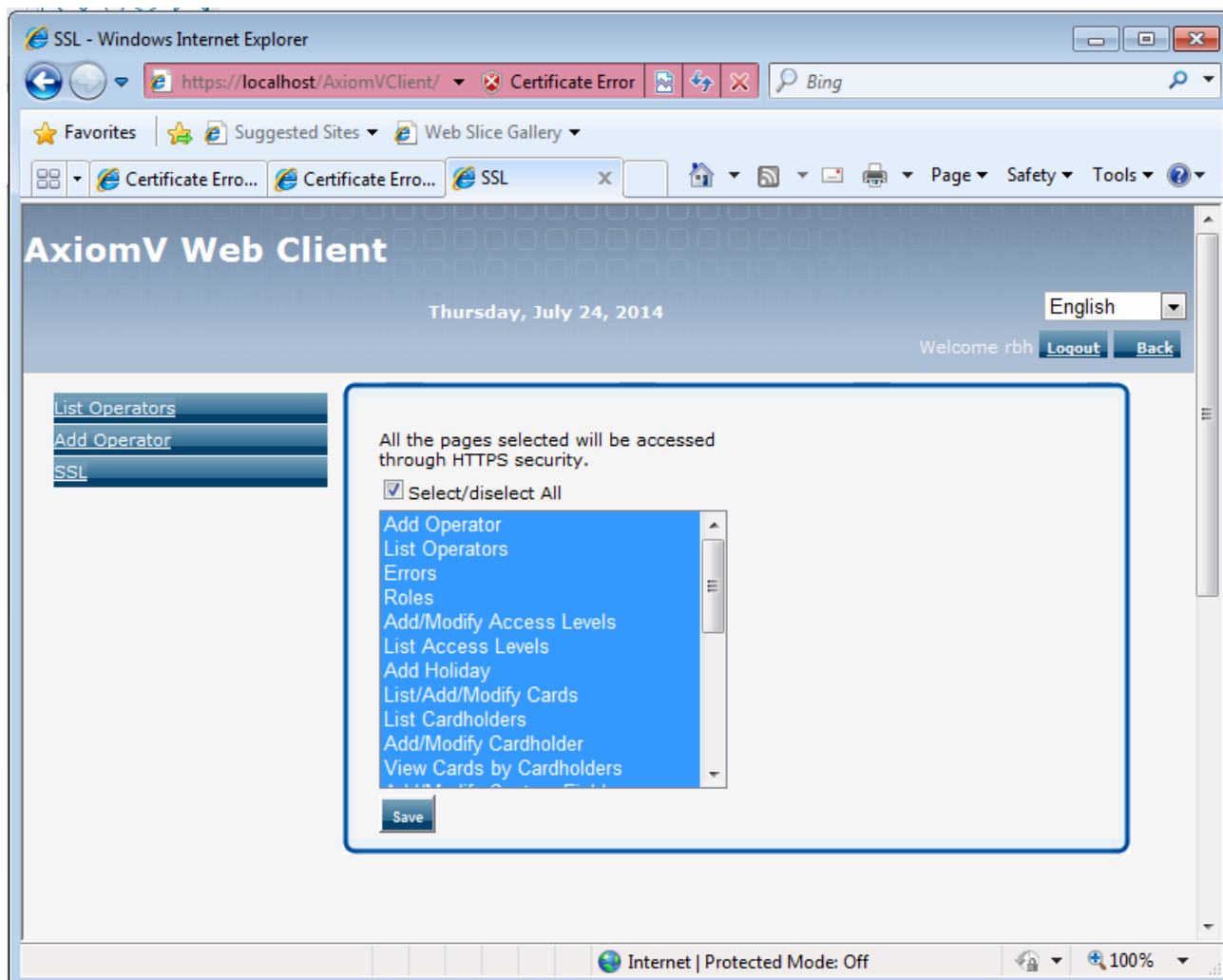


If SSL is not enabled (Enable SSL = false) in web.config file, SSL tab will not show any pages to select.

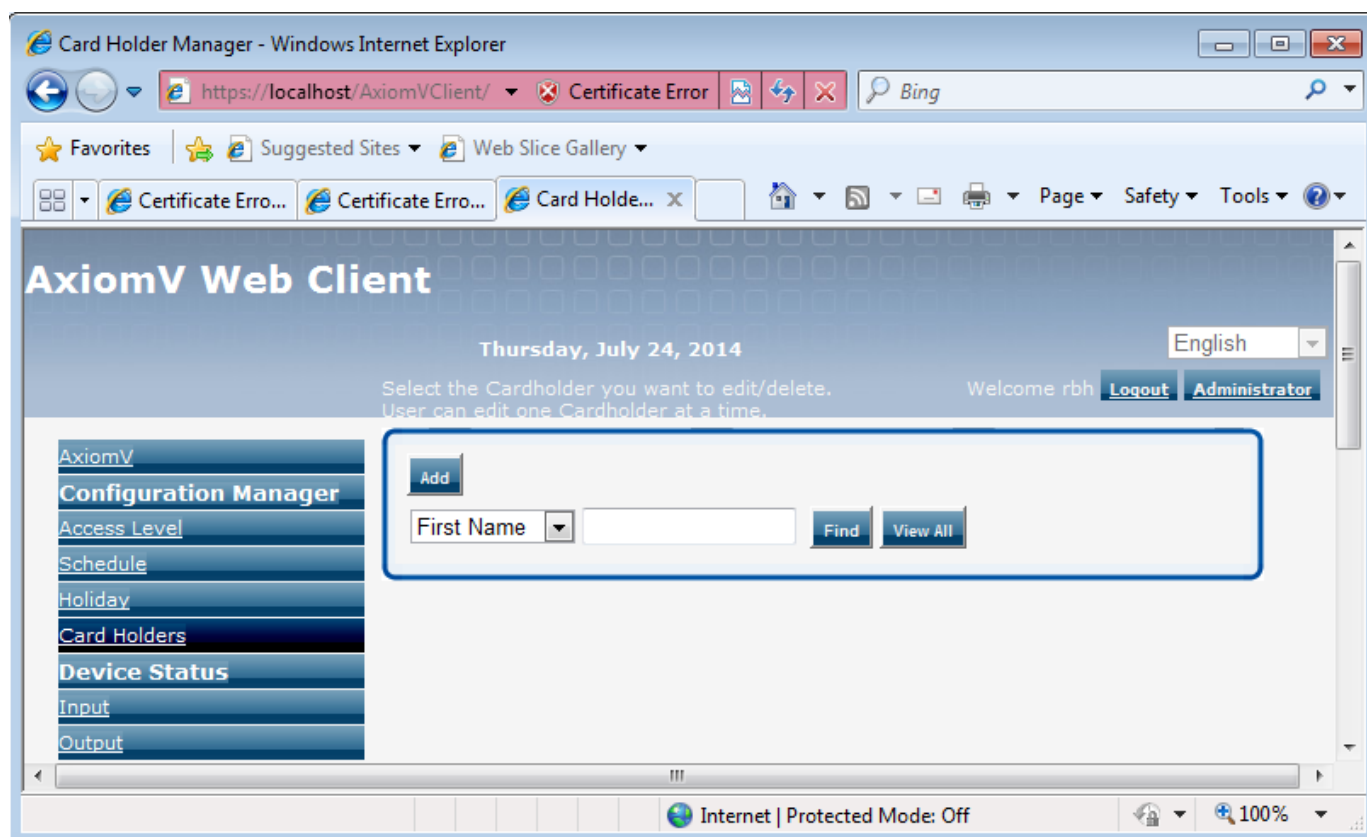


Otherwise, it will load all the pages SSL security can be set.

Once selected the pages to go through SSL, click on Save

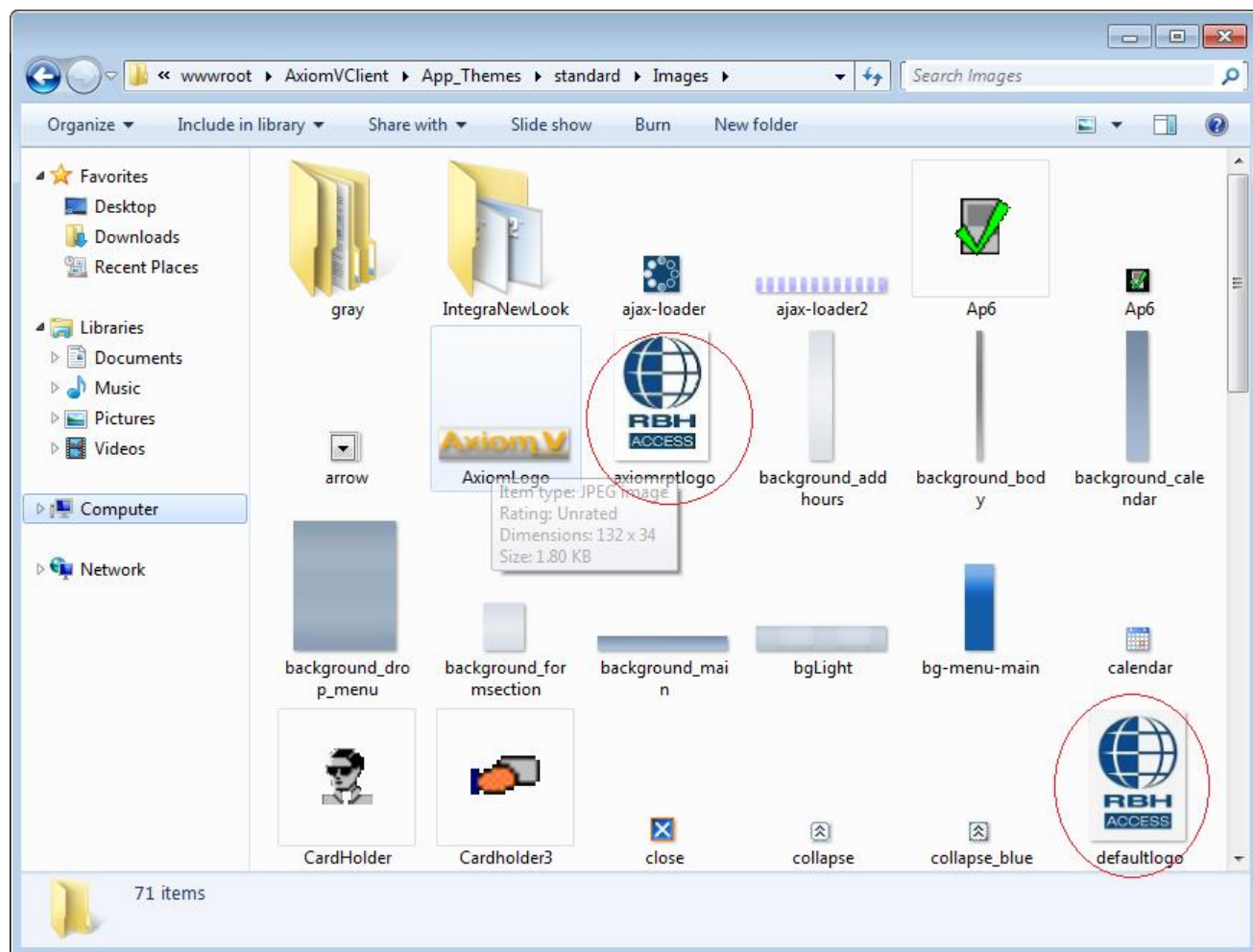


All the pages selected will now be accessed through Https security.

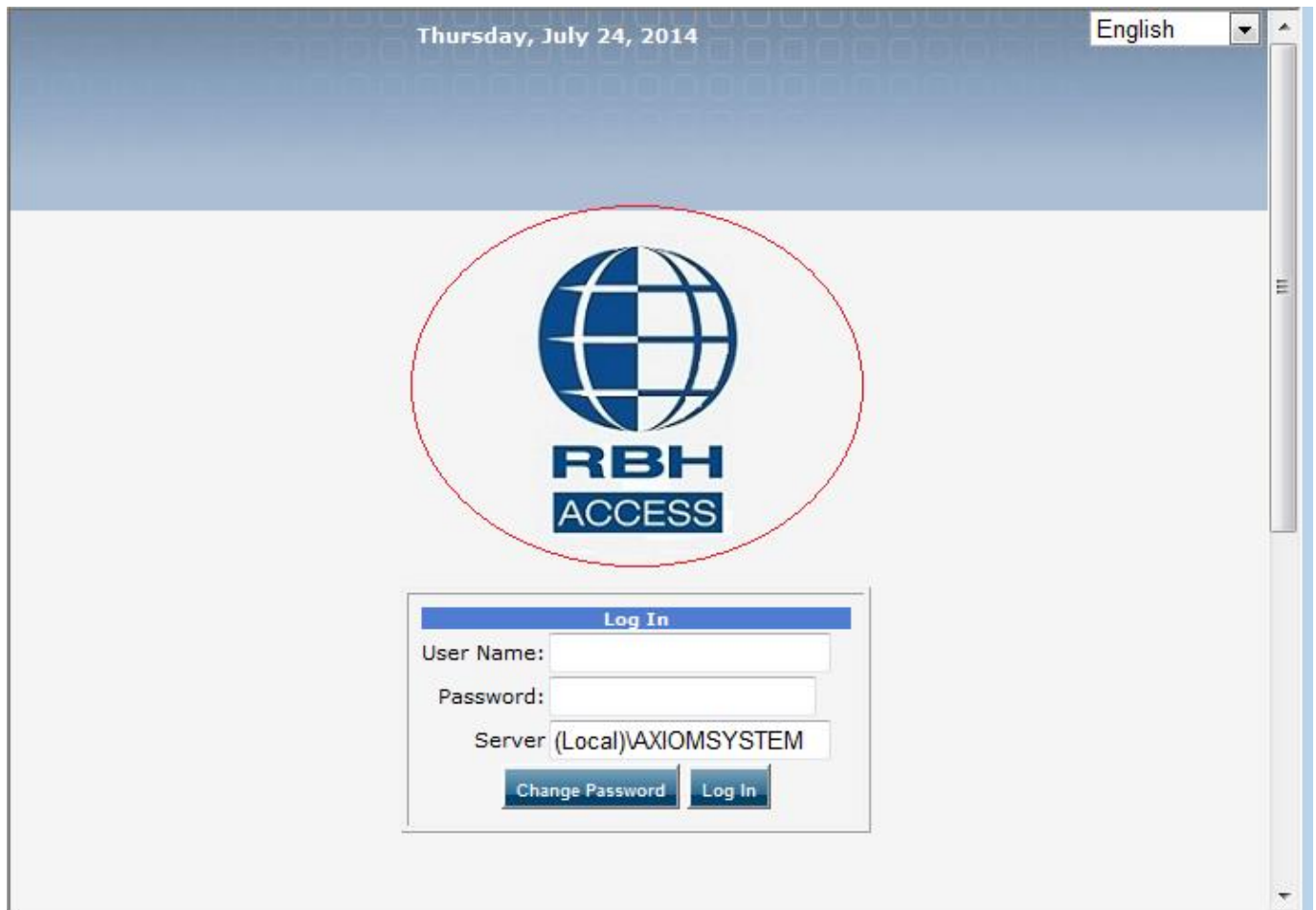


Customization

Users can use their own logo for *log in* page and the one used for *history report* by replacing these .jpg images in the *Image* folder of web client installation.



Defaultlogo.jpg image is used for *log in* Page.



And *axiomrptlogo.jpg* image is used for history reports.



Cardholder History Report

Date: Thursday, July 24, 2014

Time: 11:04 am

From:
7/24/2014 0:0:0To:
7/24/2014 23:59:59Daily:
False

Date/Time	Message	Department	Reader	Card #	Cardholder Name
-----------	---------	------------	--------	--------	-----------------

Page Number : Page 1 of 1

The text in Web. Config file can be edited to customized the footer of AWC program

```

web - Notepad
File Edit Format View Help
<?xml version="1.0" encoding="UTF-8"?>
<!--
Note: As an alternative to hand editing this file you can use the
web admin tool to configure settings for your application. Use
the website->ASP.NET Configuration option in Visual Studio.
A full list of settings and comments can be found in
machine.config.comments usually located in
\windows\Microsoft.Net\Framework\v2.0.5.0\Config
-->
<configuration>
  <appSettings>
    <add key="ADAAuthentication" value="false" />
    <add key="server" value="" />
    <add key="dbname" value="AxiomData" />
    <add key="uid" value="sa" />
    <add key="pwd" value="password" />
    <add key="EnableSSL" value="false" />
    <add key="errorOpen" value="no" />
    <add key="ServiceInfo" value="server info" />
    <add key="ServiceLink" value="http://www.google.ca" />
    <add key="ServiceLinkDescription" value="google" />
  </appSettings>
  <connectionStrings>
    <remove name="LocalSqlServer" />
    <!--<add name="AxiomDataConnectionString" connectionString="Server=localhost;Database=AxiomData;User ID=sa;Password=password" />
  </connectionStrings>
<!--
For a description of web.config changes for .NET 4.5 see http://go.microsoft.com/fwlink/?LinkId=235367.

```

Replace "ServiceInfo" value, "ServiceLink" value and "ServiceLinkDescription" value as required by user.

"ServiceLink" value can be used to put any web site link.

"ServiceLinkDescription" value will be the description (name to show in AxiomV web client footer) of the web site link in "ServiceLink" value

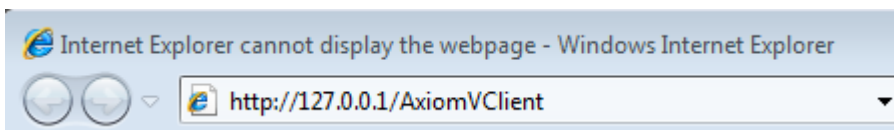
ServiceInfo value can be any text information required by user to show in the footer of AxiomV Web Client application.

AxiomV WebClient Version 2.0 © 2014 RBH Access Technologies. All rights reserved. www.RBH-Access.com
This site is best viewed with IE 6.0 or above.

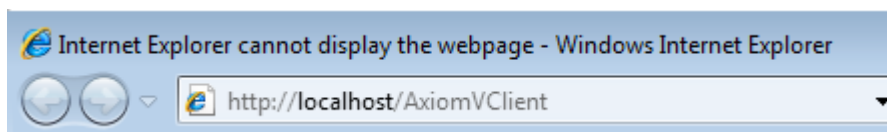
server info google

Test AWC

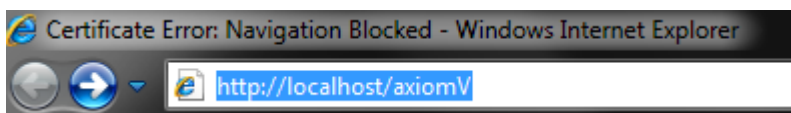
On the same machine as IIS, open a web browser (*Internet Explorer* for example) and type in, <http://localhost> or IP or Name>/<AxiomVClient or another name >/



OR



Or, for a site named AxiomV, see below.



For SSL enabled configurations replace `http://` with `https://`.