

Axiom Lite™



Technical Guide

Installing Integra32

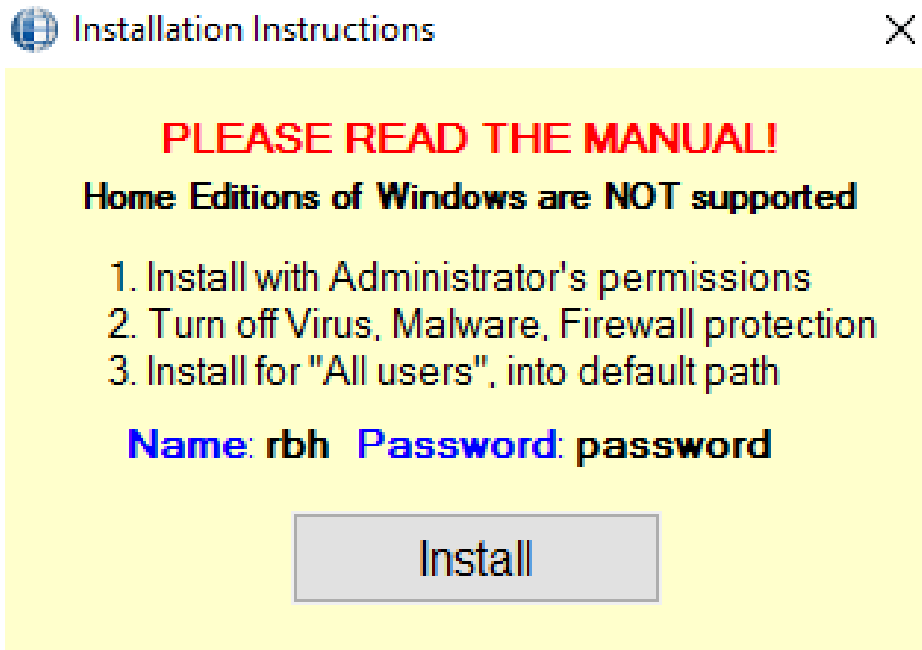
To begin installation, click **Next** when this window appears.



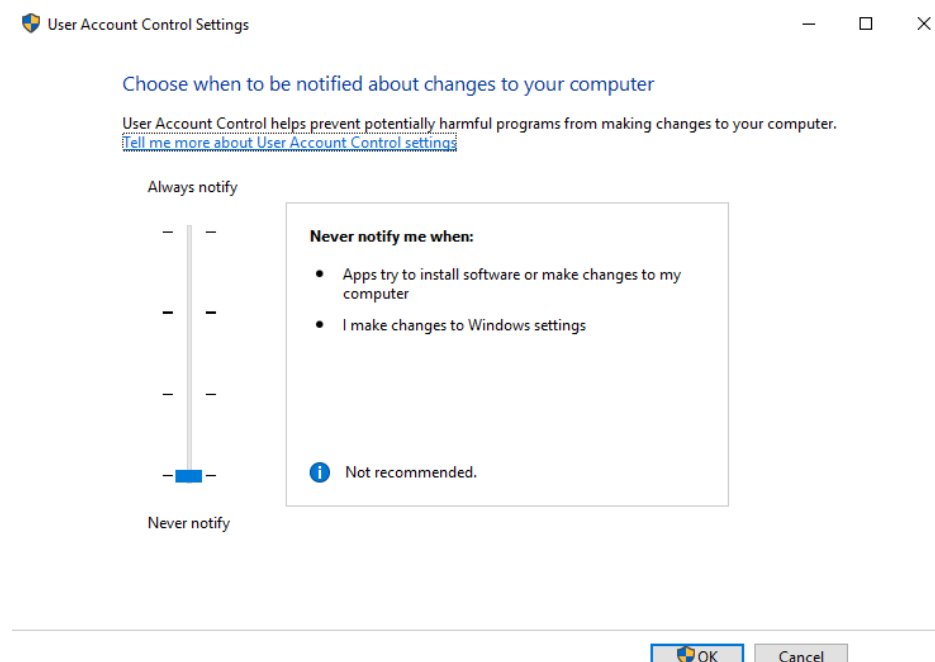
Select **Install Server**.



Before continuing with the installation, make sure you have read the manual below.

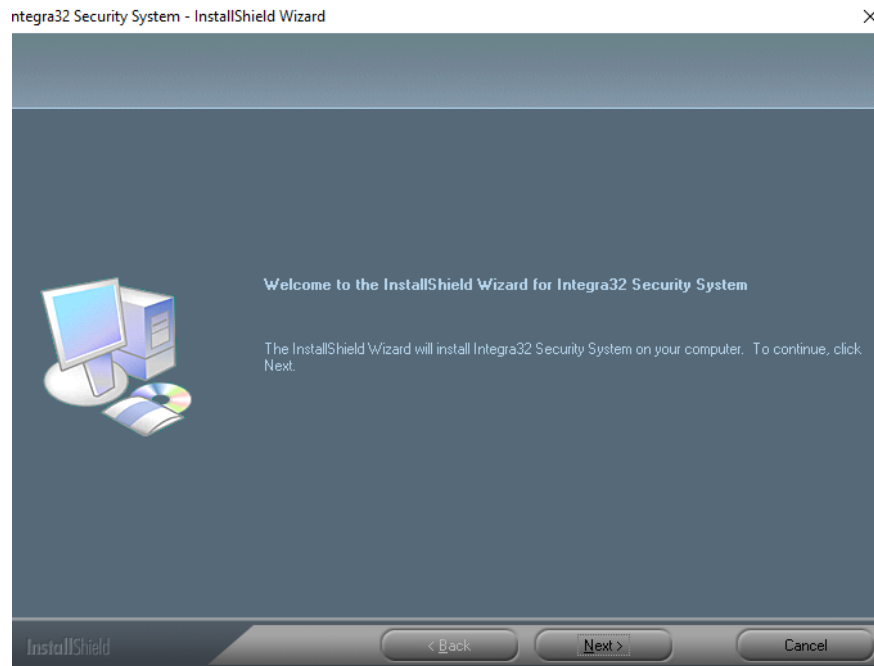


Note: also make sure User Account Control is set to never notify. See below.

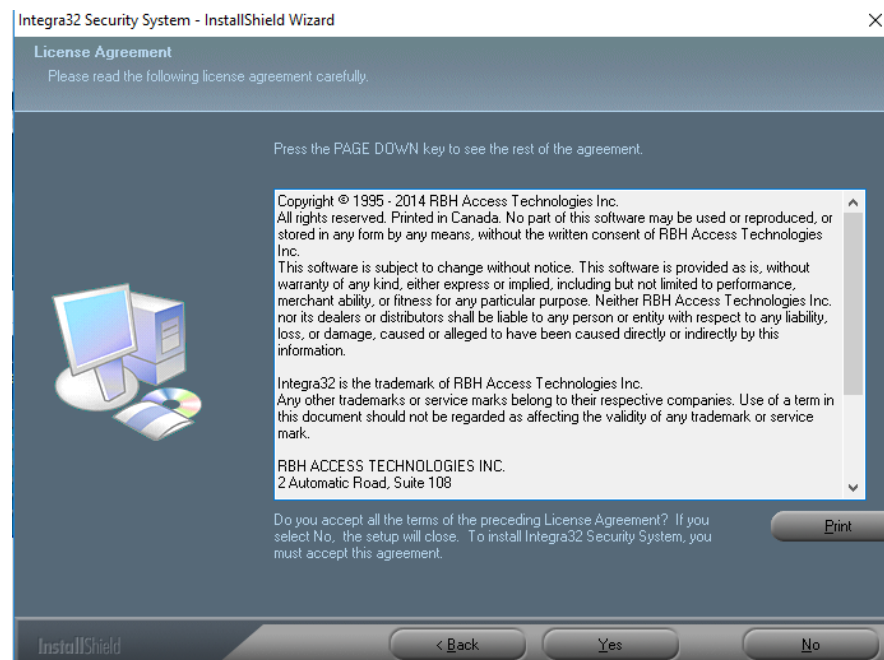


TGAL10 – Installing Integra32 Software

Click **Install** and then Click **Next** to continue.



Click **Yes** to accept the **Terms and Agreement**.



Insert User Name and Company Name and Click **Next** to continue.

Integra32 Security System - InstallShield Wizard

Customer Information
Please enter your information.

User Name:
RBH

Company Name:
Microsoft

Install this application for:

☒ Anyone who uses this computer (all users)

☐ Only for me (RBH)

InstallShield

< Back Next > Cancel

Leave the file destination defaulted as shown below and click **Next**.

Integra32 Security System - InstallShield Wizard

Choose Destination Location
Select folder where setup will install files.

Setup will install Integra32 Security System in the following folder.
To install to this folder, click Next. To install to a different folder, click Browse and select another folder.

Destination Folder:
C:\Program Files (x86)\rbh\Integra32\

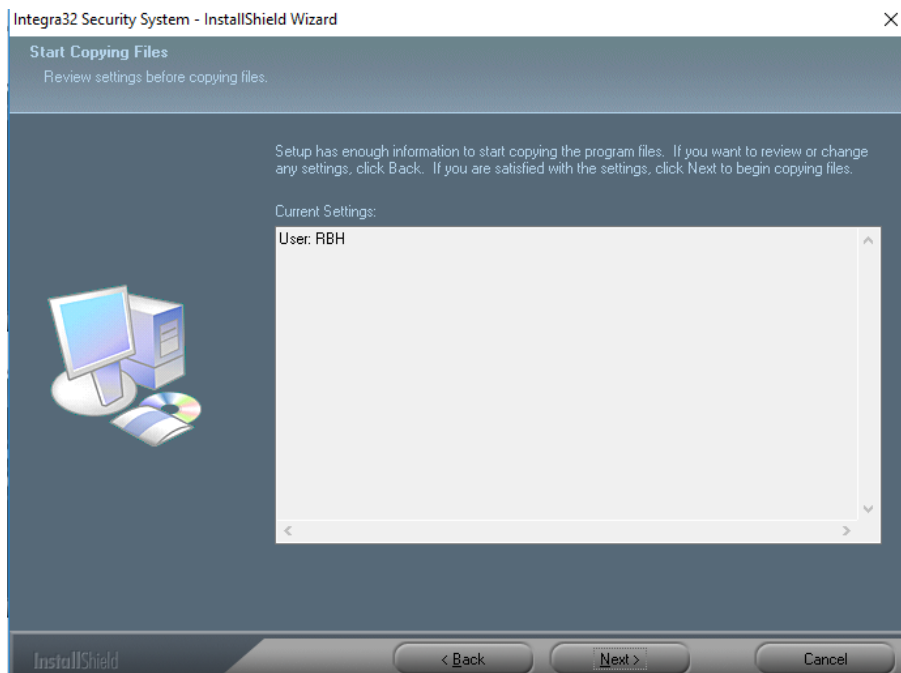
Browse...

InstallShield

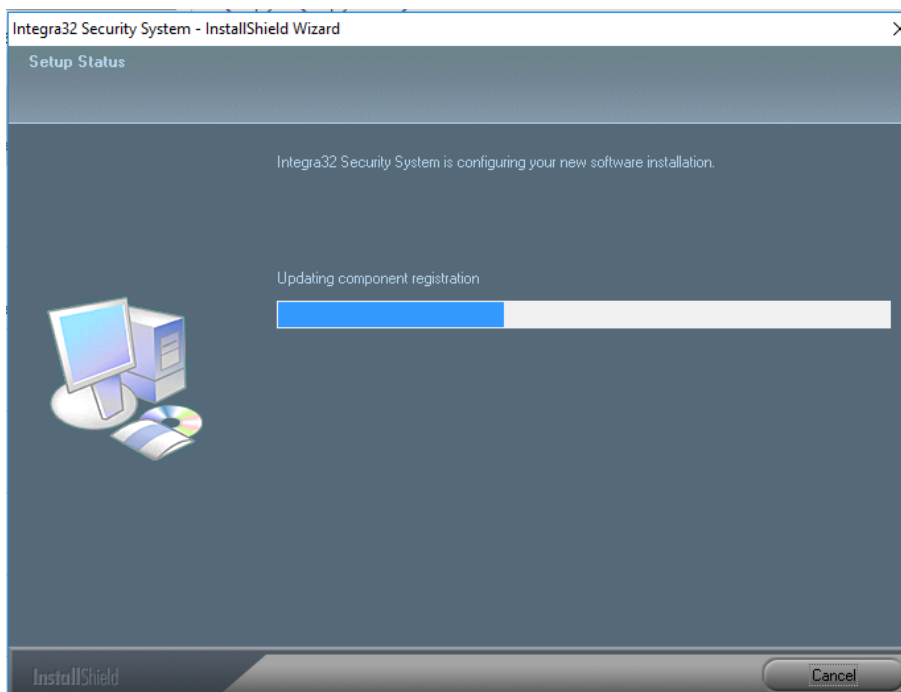
< Back Next > Cancel

TGAL10 – Installing Integra32 Software

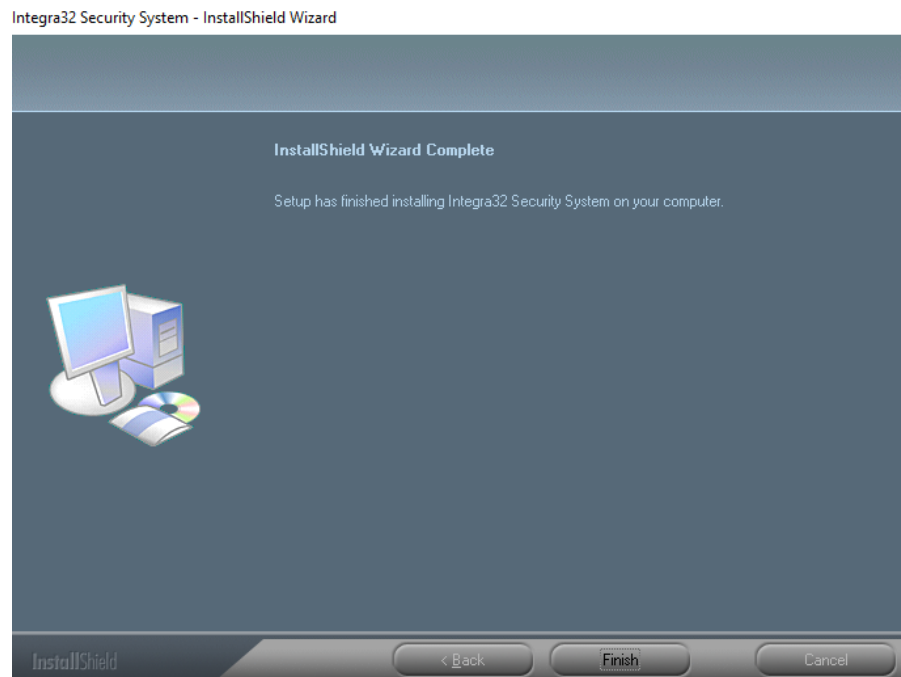
Click **Next**.



As the software is installing, you will see the progress bar shown below.



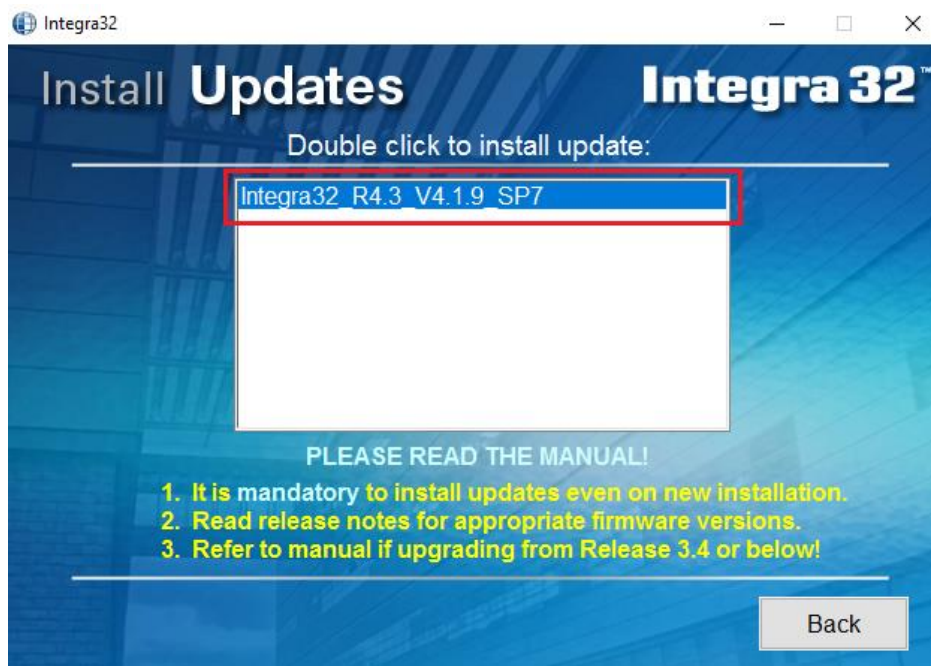
To complete the installation, click **Finish**.



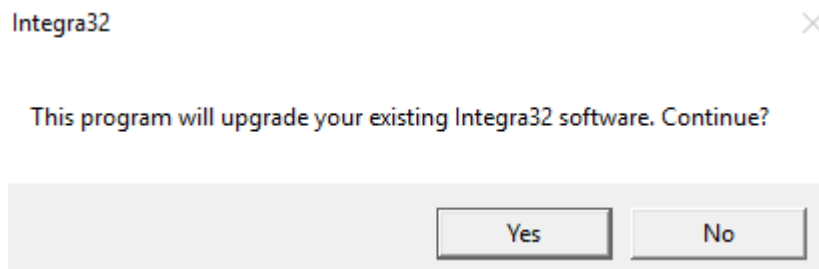
Once the software install has completed, click on Install Software Updates.



Double Click on the latest service pack



Click yes to upgrade your software to the latest version and follow the wizard Prompts.



Confirm the correct path to the Integra 32 software files and then click Start.



You should see upgrade done, just click ok and exit the upgrade wizard.

